



**die traumgarten ag**

**GARTEN  
& LIFESTYLE  
PRODUKTE**

**KATALOG 2025**

Wir freuen uns über Ihr Interesse an unserem Produktangebot und wollen Ihnen auch die Köpfe hinter die traumgarten ag® vorstellen. Seit 1991 befassen wir uns mit anspruchsvollem Design im und für den Garten und Landschaftsbau, Landschaftsarchitektur, Kommunen und Städte, Gartenliebhaber, Innenarchitektur und Vielen mehr. Seit nunmehr über 14 Jahren haben wir uns in der Hauptsache dem Metall verschrieben und sammeln unter dem Dach unserer Firma bestes Ausstattungsdesign für alle Bereiche des Garten- und Landschaftsbaues.

Sammeln bedeutet für uns natürlich nicht, „wir verkaufen alles“. Nur nach ausführlicher Prüfung und langen Überlegungen findet ein Hersteller Einzug in unser Portfolio, sozusagen handverlesen. Aber auch die Sympathie zu unseren Lieferanten ist uns sehr wichtig, über die klassischen Eigenschaften Ehrlichkeit, Zuverlässigkeit und hohe Standards im Design und Qualität hinaus.

Genauso pflegen wir auch den Kontakt zu unseren Kunden. Sympathisch, persönlich, teilweise schon freundschaftlich und immer mit einem offenen Ohr für Sie da. Uns ist der direkte Kundenkontakt ein wichtiges Anliegen, wie wir auch aus den damit verbundenen netten und positiven Kontakten und Zusammenarbeiten unsere Bestätigung und Energie schöpfen.

Wir sind stolz Ihnen nun nachfolgend das Portfolio in Cortenstahl und Aluminium RAL Pulverbeschichtet in einem einzigen Katalog zusammengefasst darstellen zu können und freuen uns auf eine angenehme und gute Zusammenarbeit.

Mit besten Grüßen Ihr  
Alexander Reich

## WIR SIND

### Praxisorientiert

Top Design und Top Produkte, aber es muss auch praxistauglich sein, leicht zu verbauen und das ohne aufwendige Schulungen. Darauf schauen wir mit wachsamen Augen mit unserer über 33 jährigen Erfahrung im Garten- und Landschaftsdesign.

### Qualität

Nur beste Qualität ist uns gut genug. Und deshalb ist auch alles gefertigt in der EU.

### Immer am Ball

Wir setzen Trends als Anbieter für System-Metallkonstruktionen für den Garten- und Landschaftsbau und die Landschaftsarchitektur. Dieser Innovationswille ist nach wie vor der Motor für uns und unsere Partner.

### Partnerschaftlich

Als inhabergeführtes Unternehmen wollen wir am Puls unserer Kunden und Partner in freundschaftlichem Miteinander die Welt etwas „rostiger“ und „farbiger“ machen.



**die traumgarten ag**





photo by The Pot Company

## INHALTSVERZEICHNIS

PFLANZGEFÄßE	8
GRILL	18
FEUERSTELLEN	20
HOLZLAGER	23
BRUNNEN & WASSERSPIELE	26
SICHTSCHUTZ	32
BEETKANTEN	40
TREPPEN	44
SKULPTUREN	45
GARTENDEKO	46
BRIEFKASTEN	48
GARTENLEUCHTEN	49
HOLZBÄNKE	50
WANDBILDER	52
HOME DEKORATION	54
ZUBEHÖR	58
WUNSCH- UND MAßANFERTIGUNGEN	60

# KONTAKT

Wir sind für sie da.

**Ansprechpartner:**

Alexander Reich - Inhaber,  
Fachberatung, Innen- und Außendienst  
Tel. +49 (0) 8133 91783 - 40  
[info@traumgarten-ag.com](mailto:info@traumgarten-ag.com)

# ANSCHRIFT

die traumgarten ag®  
Dorfstraße 6  
D-85777 Fahrenzhausen / Lkr. Freising

Bürokernzeiten 09:00 - 17:00 Uhr

# Im Internet

[www.traumgarten-ag.com](http://www.traumgarten-ag.com)

Besuchen Sie uns auch auf:



**Wir liefern EU-weit!**

Und deshalb sind alle nachfolgenden Artikelnamen und Beschreibungen in Englisch.

**Preise und Frachtkosten auf Anfrage.**





Die traumgarten ag® ist eine Marke für hochwertige Gartenprodukte. Unsere Produkte sind in städtischen Räumen, Parks, Einkaufszentren, Hotels sowie auf Privatgrundstücken zu finden. Wir bieten eine große Auswahl an modernen Pflanzgefäßen, Sichtschutz, Feuerstellen und Grills, Brunnen und Wasserspielen, Gartentritten und Zubehör aus Cortenstahl und Aluminium RAL Pulverbeschichtet.

Unser umfangreicher Katalog sollte das enthalten, was Sie suchen, aber keine Sorge, wir können jedes unserer Produkte individuell anpassen. Wenn ein Produkt nicht in unserem Angebot ist, arbeitet unser Designteam mit Ihnen zusammen, um Ihre Ideen zu verwirklichen und Ihre wildesten Träume zu erfüllen. Unsere Designer erstellen zunächst ein Produktmodell zu Ihren Vorstellungen, bevor sie es in die Produktion geben, die dann Ihr Design nach den besten Standards mit den hochwertigsten und langlebigsten Materialien individuell anfertigt.

**Alle Produkte sind selbstverständlich auch in Aluminium RAL Pulverbeschichtet erhältlich.**





Corten, der Markenname für wetterfesten Stahl, der in den 1930er Jahren von US Steel patentiert wurde, ist vielen vielleicht unbekannt, erfreut sich jedoch bei Architekten und Landschaftsarchitekten aufgrund seiner organischen, erdigen Qualität zunehmender Beliebtheit.

Cortenstahl zeichnet sich durch eine erhöhte Widerstandsfähigkeit gegenüber Witterungseinflüssen aus und erzeugt ein sich ständig veränderndes rostähnliches Aussehen. Unter Witterungseinflüssen wie Niederschlag, Wind oder Sonne regeneriert sich die Schutzschicht kontinuierlich, wodurch ein sich ständig veränderndes rostähnliches Aussehen entsteht. Dies ist das Ergebnis der Oxidation, wenn Sauerstoff aus der Luft mit Metallen reagiert und Oxide entstehen, die ihre eigenen Strukturen bilden, die extrem leicht und praktisch undurchlässig sind. Die Oberfläche wird im Laufe der Jahre stabiler, im Gegensatz zu lackiertem Stahl, der sich unter Witterungseinflüssen allmählich zersetzt.

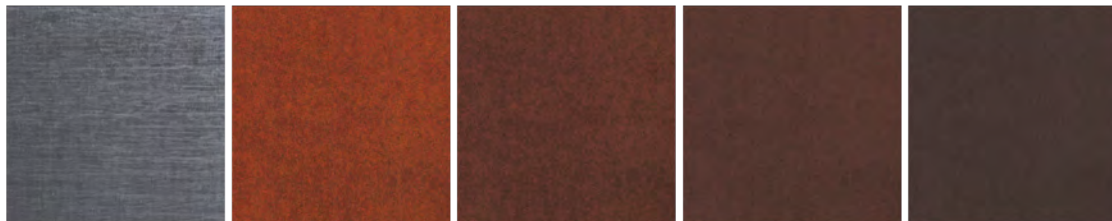
In der Vergangenheit war dieser Rohstofftyp in erster Linie ein langlebiges und korrosionsbeständiges Material, das zunächst zur Herstellung von Containern, im Brückenbau und Elektrolokomotiven verwendet wurde. Heute wird er für Gebäudefassaden, oder als Highlight für Innenarchitektur und Gärten verwendet. Die erdige braune Farbe bietet einen markanten Kontrast zur Umgebung und passt perfekt in Gärten, wo sie dazu beiträgt Akzente zu setzen. Dies ist einer der Hauptgründe, warum sie in den letzten Jahren in Gärten, öffentlichen Räumen und auf privaten Grundstücken immer häufiger verwendet wird.

Corten ist außerdem umweltfreundlich und ein nachhaltiges Material, da es keine Wartung erfordert und immer wieder recycelt werden kann.





# ENTWICKLUNG CORTEN



AUSLIERUNGS-  
ZUSTAND

1 MONAT

6 MONATE

2 JAHRE

5 JAHRE

## FARBEN & ICONS IM KATALOG:

FARBE	NAME	RAL	GLANZINDEX
	Verkehrsweiß	RAL 9016	30%
	Anthrazit	RAL 7016	30%
	Tiefschwarz	RAL 9005	30%
	Grünblau	RAL 5001	30%
	Gelbgrün	RAL 6018	30%
	Honiggelb	RAL 1005	30%
	Reinorange	RAL 2004	30%
	Verkehrsrot	RAL 3020	30%
	wählen Sie Ihre Farbe aus der RAL Palette. Wunschfarben auf Anfrage.		

ICON	BESCHREIBUNG
	recyclable
	LED light
	configurable measurement
	requires power connection
	drainage holes
	available with wheels
	coating inside
	bottomless
	DIY montage



**PLANTER | PEDES**

≡ CORTEN 2 MM



CODE	LENGTH (MM)	WIDTH (MM)	HEIGHT (MM)	WEIGHT (KG)
CPLPED01	600	600	1000	45,4
CPLPED02	600	600	800	38,1
CPLPED03	600	600	600	29,7
CPLPED04	600	600	400	23,5
CPLPED05	800	800	1000	63,0
CPLPED06	800	800	800	55,4
CPLPED07	800	800	600	43,5
CPLPED08	800	800	400	33,8
CPLPED09	1000	1000	1000	81,8
CPLPED10	1000	1000	800	70,9
CPLPED11	1000	1000	600	57,5
CPLPED12	1000	1000	400	45,3
CPLPED13	1200	1200	1000	101,8
CPLPED14	1200	1200	800	88,2
CPLPED15	1200	1200	600	72,6
CPLPED16	1200	1200	400	58,0
CPLPED17	1400	1400	1000	123,0
CPLPED18	1400	1400	800	106,1
CPLPED19	1400	1400	600	89,0
CPLPED20	1400	1400	400	71,9
CPLPED21	1200	500	600	45,0
CPLPED22	1500	500	600	54,0
CPLPED23	2000	500	600	68,0



**PLANTER | HONES**

≡ CORTEN 2 MM



CODE	LENGTH (MM)	WIDTH (MM)	HEIGHT (MM)	WEIGHT (KG)
CPLHON01	900	300	800	38,0
CPLHON02	1000	500	1000	60,6
CPLHON03	1000	500	800	51,0
CPLHON04	1000	500	600	41,4
CPLHON05	1000	500	400	31,8
CPLHON06	1200	300	800	47,0
CPLHON07	1200	500	600	45,0
CPLHON08	1200	400	400	31,0
CPLHON09	1500	500	1000	82,1
CPLHON10	1500	500	800	69,3
CPLHON11	1500	500	600	55,2
CPLHON12	1500	500	400	43,7
CPLHON13	1500	400	400	37,0
CPLHON14	1500	300	800	57,0
CPLHON15	2000	500	1000	103,6
CPLHON16	2000	500	800	87,6
CPLHON17	2000	500	600	69,9
CPLHON18	2000	500	400	55,6
CPLHON19	2000	600	600	77,3
CPLHON20	2000	400	500	58,4
CPLHON21	2000	400	400	47,0

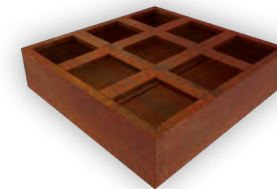


**PLANTER | CONC**

≡ CORTEN 2 MM



CODE	TOP DIAMETER (MM)	BOTTOM DIAMETER (MM)	HEIGHT (MM)	WEIGHT (KG)
CPLCON01	500	375	500	14,0
CPLCON02	600	350	1000	31,2
CPLCON03	600	400	800	25,8
CPLCON04	600	450	600	19,7
CPLCON05	600	500	400	14,9
CPLCON06	800	550	1000	43,4
CPLCON07	800	600	800	35,7
CPLCON08	800	650	600	29,0
CPLCON09	800	700	400	21,7
CPLCON10	1000	750	1000	56,5
CPLCON11	1000	800	800	47,7
CPLCON12	1000	850	600	38,5
CPLCON13	1000	900	400	29,4



**PLANTER | KERNEL**

≡ CORTEN 2 MM



CODE	LENGTH (MM)	WIDTH (MM)	HEIGHT (MM)	WEIGHT (KG)
CPLKER01	800	800	300	45,0
CPLKER02	1200	1200	300	85,0





## PLANTER | RECTAN

✦ CORTEN 2 MM



CODE	LENGTH (MM)	WIDTH (MM)	HEIGHT (MM)	WEIGHT (KG)
CPLREC01	400	400	1000	30,0
CPLREC02	400	400	800	25,0
CPLREC03	400	400	600	22,0
CPLREC04	400	400	400	15,0
CPLREC05	500	500	1000	38,0
CPLREC06	500	500	500	22,0
CPLREC07	600	600	1000	47,8
CPLREC08	600	600	800	40,1
CPLREC09	600	600	600	30,9
CPLREC10	600	600	400	24,8
CPLREC11	700	700	700	42,0
CPLREC12	800	800	1000	66,3
CPLREC13	800	800	800	53,5
CPLREC14	800	800	600	43,5
CPLREC15	800	800	400	35,6
CPLREC16	1000	1000	1000	88,0
CPLREC17	1000	1000	800	74,4
CPLREC18	1000	1000	600	60,9
CPLREC19	1000	1000	400	47,7
CPLREC20	1200	1200	1000	107,1
CPLREC21	1200	1200	800	92,1
CPLREC22	1200	1200	600	76,4
CPLREC23	1200	1200	400	61,1
CPLREC24	1400	1400	1000	129,5
CPLREC25	1400	1400	800	111,1
CPLREC26	1400	1400	600	93,6
CPLREC27	1400	1400	400	75,7

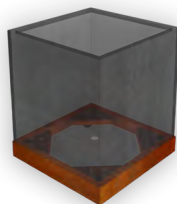


## PLANTER | MANGA

✦ CORTEN 2 MM



CODE	LENGTH (MM)	WIDTH (MM)	HEIGHT (MM)	WEIGHT (KG)
CPLMAN01	500	500	800	23,0
CPLMAN02	500	500	600	19,0
CPLMAN03	600	600	1200	37,0
CPLMAN04	600	600	1000	33,0



## ACCESSORY | SKATERO

✦ CORTEN 2 MM



CODE	LENGTH (MM)	WIDTH (MM)	HEIGHT (MM)	WEIGHT (KG)
CPLSKA01	600	600	115	16,0
CPLSKA02	800	800	115	18,0
CPLSKA03	1000	1000	115	20,0

\* ROLLER BASE FOR RECTAN PLANTER



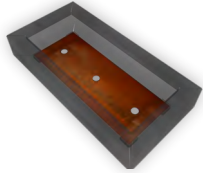


**PLANTER | TURRIM**

≡ CORTEN 2 MM



CODE	LENGTH (MM)	WIDTH (MM)	HEIGHT (MM)	WEIGHT (KG)
CPLTUR01	600	300	100	6,0



**BOTTOM | TURRIM**

≡ CORTEN 2 MM



CODE	LENGTH (MM)	WIDTH (MM)	HEIGHT (MM)	WEIGHT (KG)
CPLTBO01	500	200	2	-

\* THIS PLANTER CAN BE STACKED



**PLANTER | UNUS**

≡ CORTEN 2 MM



CODE	LENGTH (MM)	WIDTH (MM)	HEIGHT (MM)	WEIGHT (KG)
CPLUNU01	800	800	300	20,0
CPLUNU02	800	800	500	33,0
CPLUNU03	1000	1000	300	25,0
CPLUNU04	1000	1000	500	42,0
CPLUNU05	1200	1200	300	32,0
CPLUNU06	1200	1200	500	48,0
CPLUNU07	1400	1400	300	37,0
CPLUNU08	1400	1400	500	53,0
CPLUNU09	1600	800	300	28,0
CPLUNU10	1600	800	500	43,0

\* CAN BE COMBINED WITH GENUS



**PLANTER | GENUS**

≡ CORTEN 2 MM



CODE	LENGTH (MM)	WIDTH (MM)	HEIGHT (MM)	WEIGHT (KG)
CPLGEN01	800	565	300	18,0
CPLGEN02	800	565	500	20,0
CPLGEN03	1000	707	300	15,0
CPLGEN04	1000	707	500	17,0
CPLGEN05	1200	848	300	19,0
CPLGEN06	1200	848	500	21,0
CPLGEN07	1400	990	300	28,0
CPLGEN08	1400	990	500	32,0

\* CAN BE COMBINED WITH UNUS







## PLANTER | **CYLINDRO**

♁ CORTEN 2 MM



CODE	DIAMETER (MM)	HEIGHT (MM)	WEIGHT (KG)
CPLCYL01	350	1000	19,0
CPLCYL02	350	800	15,0
CPLCYL03	350	600	12,0
CPLCYL04	600	1000	36,5
CPLCYL05	600	800	30,5
CPLCYL06	600	600	24,2
CPLCYL07	600	400	18,4
CPLCYL08	800	1000	50,7
CPLCYL09	800	800	41,8
CPLCYL10	800	600	34,0
CPLCYL11	800	400	26,5
CPLCYL12	1000	1000	64,6
CPLCYL13	1000	800	54,8
CPLCYL14	1000	600	45,1
CPLCYL15	1000	400	35,7
CPLCYL16	1200	1000	82,0
CPLCYL17	1200	800	68,6
CPLCYL18	1200	600	56,9
CPLCYL19	1200	400	45,8
CPLCYL20	1400	1000	99,2
CPLCYL21	1400	800	85,1
CPLCYL22	1400	600	71,1
CPLCYL23	1400	400	57,0



## PLANTER | **OREN**

♁ CORTEN 2 MM



CODE	DIAMETER (MM)	HEIGHT (MM)	WEIGHT (KG)
CPLORE01	600	1000	28,8
CPLORE02	600	800	23,8
CPLORE03	600	600	18,8
CPLORE04	600	400	13,8
CPLORE05	800	1000	40,1
CPLORE06	800	800	32,9
CPLORE07	800	600	26,7
CPLORE08	800	400	20,0
CPLORE09	1000	1000	52,1
CPLORE10	1000	800	43,8
CPLORE11	1000	600	35,5
CPLORE12	1000	400	27,1



## PLANTER | **BARIUM**

♁ CORTEN 4 MM



CODE	LENGTH (MM)	WIDTH (MM)	HEIGHT (MM)	WEIGHT (KG)
CPLBAR01	1800	490	900	-





## PLANTERS | MODULA

✚ CORTEN 1 MM



CODE	LENGTH (MM)	WIDTH (MM)	HEIGHT (MM)	WEIGHT (KG)
CPLMOD01	450	450	450	10,0
CPLMOD02	900	450	450	14,0
CPLMOD03	900	900	450	20,0

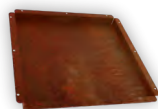


## SIDE | MODULA

✚ CORTEN 1 MM



CODE	LENGTH (MM)	WIDTH (MM)	HEIGHT (MM)	WEIGHT (KG)
CPLMOW01	445	418	20	3,5
CPLMOW02	890	418	20	2,0



## BOTTOM | MODULA

✚ CORTEN 1 MM



CODE	LENGTH (MM)	WIDTH (MM)	HEIGHT (MM)	WEIGHT (KG)
CPPLMOB01	430	430	32	2,0

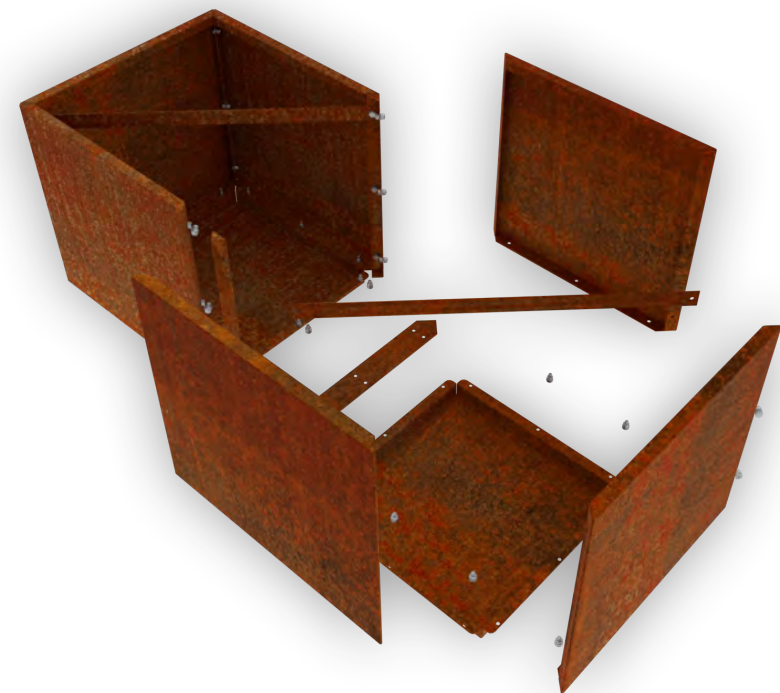


## SIDE SUPPORT | MODULA

✚ CORTEN 1 MM



CODE	LENGTH (MM)	WIDTH (MM)	HEIGHT (MM)	WEIGHT (KG)
CPLMOR01	624	1	30	0,2



## SIDE CONNECTOR | MODULA

✚ CORTEN 1 MM



CODE	LENGTH (MM)	WIDTH (MM)	HEIGHT (MM)	WEIGHT (KG)
CPLMWC01	23	23	417	0,2



## BOTTOM CONNECTOR | MODULA

✚ CORTEN 1 MM



CODE	LENGTH (MM)	WIDTH (MM)	HEIGHT (MM)	WEIGHT (KG)
CPLMFC01	57	447	1	0,2





## PLANTERS | BESULA

✚ CORTEN 2 MM



CODE	LENGTH (MM)	WIDTH (MM)	HEIGHT (MM)	WEIGHT (KG)
CPLBES01	1500	800	600	60,0



## SIDE | BESULA

✚ CORTEN 2 MM



CODE	LENGTH (MM)	WIDTH (MM)	HEIGHT (MM)	WEIGHT (KG)
CPLBEW01	300	2	800	5,5
CPLBEW02	500	2	800	8,3
CPLBEW03	700	2	800	11,0
CPLBEW04	900	2	800	13,7
CPLBEW05	300	2	600	4,3
CPLBEW06	500	2	600	6,5
CPLBEW07	700	2	600	8,6
CPLBEW08	900	2	600	11,0
CPLBEW09	300	2	400	3,0
CPLBEW10	500	2	400	4,5
CPLBEW11	700	2	400	6,0
CPLBEW12	900	2	400	7,6



## SIDE CONNECTOR | BESULA

✚ CORTEN 2 MM



CODE	LENGTH (MM)	WIDTH (MM)	HEIGHT (MM)	WEIGHT (KG)
CPLBEC01	50	50	800	2,5
CPLBEC02	50	50	600	1,8
CPLBEC03	50	50	400	1,3



### PLANTER | **RECTAN**

ALUMINUM 3 MM



CODE	LENGTH (MM)	WIDTH (MM)	HEIGHT (MM)	WEIGHT (KG)
APLREC01	400	400	400	7,0
APLREC02	500	500	500	12,0
APLREC03	600	600	600	16,0
APLREC04	700	700	700	22,0
APLREC05	800	800	800	29,0
APLREC06	800	800	600	23,0
APLREC07	1000	1000	800	38,0
APLREC08	1000	1000	600	30,0
APLREC09	1200	1200	800	47,0
APLREC10	1400	1400	800	58,0



### PLANTER | **HONES**

ALUMINUM 3 MM



CODE	LENGTH (MM)	WIDTH (MM)	HEIGHT (MM)	WEIGHT (KG)
APLHON01	1200	500	600	24,0
APLHON02	1500	500	600	29,0
APLHON03	2000	500	600	37,0

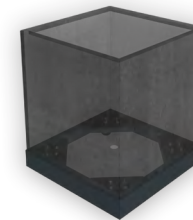


### PLANTER | **PEDES**

ALUMINUM 3 MM



CODE	LENGTH (MM)	WIDTH (MM)	HEIGHT (MM)	WEIGHT (KG)
APLPED01	600	600	600	16,0
APLPED02	800	800	800	28,0
APLPED03	1000	1000	800	36,0
APLPED04	1200	1200	800	46,0
APLPED05	1400	1400	800	56,0



### ACCESSORY | **SKATERO**

ALUMINUM 3 MM



CODE	LENGTH (MM)	WIDTH (MM)	HEIGHT (MM)	WEIGHT (KG)
APLSKA01	600	600	115	11,0
APLSKA02	800	800	115	12,0
APLSKA03	1000	1000	115	14,0

\* ROLLER BASE FOR RECTAN PLANTER





### PLANTER | CYLINDRO

ALUMINUM 3 MM



CODE	DIAMETER (MM)	HEIGHT (MM)	WEIGHT (KG)
APLCYL01	350	1000	10,0
APLCYL02	350	800	8,0
APLCYL03	350	600	6,0
APLCYL04	600	600	12,0
APLCYL05	800	800	21,0
APLCYL06	800	600	17,0
APLCYL07	1000	800	26,0
APLCYL08	1000	600	22,0
APLCYL09	1200	800	33,0



### PLANTER | CONC

ALUMINUM 3 MM



CODE	DIAMETER (MM)	HEIGHT (MM)	WEIGHT (KG)
APLCON01	1000	800	31,0
APLCON02	800	800	23,0
APLCON03	600	600	13,0



### PLANTER | PLANUS

ALUMINUM 3 MM



CODE	LENGTH (MM)	WIDTH (MM)	HEIGHT (MM)	WEIGHT (KG)
APLPLA01	900	300	800	20,0
APLPLA02	1200	300	800	24,0
APLPLA03	1500	300	800	29,0



### PLANTER | LATIUS

ALUMINUM 3 MM



CODE	LENGTH (MM)	WIDTH (MM)	HEIGHT (MM)	WEIGHT (KG)
APLLAT01	500	500	800	12,0
APLLAT02	500	500	600	10,0
APLLAT03	600	600	1200	20,0
APLLAT04	600	600	1000	17,0



### PLANTER | AUGET

ALUMINUM 3 MM



CODE	LENGTH (MM)	WIDTH (MM)	HEIGHT (MM)	WEIGHT (KG)
APLAUG01	1200	500	600	23,0
APLAUG02	1500	500	600	28,0
APLAUG03	2000	500	600	35,0



### PLANTER | LONGUS

ALUMINUM 3 MM



CODE	LENGTH (MM)	WIDTH (MM)	HEIGHT (MM)	WEIGHT (KG)
APLLON01	400	400	1000	16,0
APLLON02	400	400	800	13,0
APLLON03	500	500	1000	20,0



### PLANTER | UNUS

ALUMINUM 3 MM



CODE	LENGTH (MM)	WIDTH (MM)	HEIGHT (MM)	WEIGHT (KG)
APLUNU01	800	800	300	9,0
APLUNU02	800	800	500	16,0
APLUNU03	1000	1000	300	25,0
APLUNU04	1000	1000	500	11,0
APLUNU05	1200	1200	300	13,0
APLUNU06	1200	1200	500	27,0
APLUNU07	1400	1400	300	15,0
APLUNU08	1400	1400	500	31,0
APLUNU09	1600	800	300	13,0
APLUNU10	1600	800	500	24,0

\* CAN BE COMBINED WITH GENUS



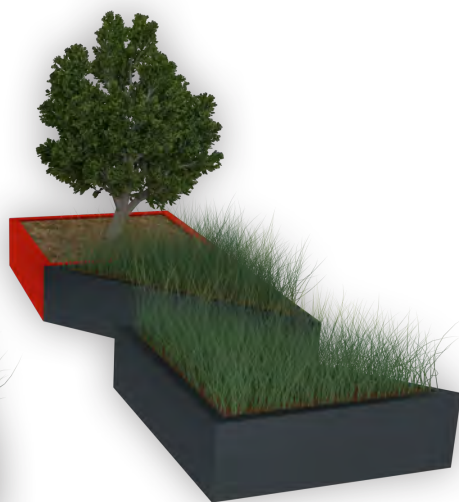
### PLANTER | GENUS

ALUMINUM 3 MM



CODE	LENGTH (MM)	WIDTH (MM)	HEIGHT (MM)	WEIGHT (KG)
APLGEN01	800	565/565	300	18,0
APLGEN02	800	565/565	500	20,0
APLGEN03	1000	707/707	300	15,0
APLGEN04	1000	707/707	500	17,0
APLGEN05	1200	848/848	300	19,0
APLGEN06	1200	848/848	500	21,0
APLGEN07	1400	990/990	300	28,0
APLGEN08	1400	990/990	500	32,0

\* CAN BE COMBINED WITH UNUS







### PLANTER | **ANGUS A**

ALUMINUM 3 MM



CODE	LENGTH (MM)	WIDTH (MM)	HEIGHT (MM)	WEIGHT (KG)
APLANG01	1000	400	800	21,0

\* CAN BE COMBINED WITH ANGUS B



\* COMBO - ANGUS A + ANGUS B + ANGUS A



### PLANTER | **ANGUS B**

ALUMINUM 3 MM



CODE	LENGTH (MM)	WIDTH (MM)	HEIGHT (MM)	WEIGHT (KG)
APLANG02	1000	400	800	19,0

\* CAN BE COMBINED WITH ANGUS A OR ANGUS C



\* COMBO - ANGUS C + ANGUS B + ANGUS C



### PLANTER | **ANGUS C**

ALUMINUM 3 MM



CODE	LENGTH (MM)	WIDTH (MM)	HEIGHT (MM)	WEIGHT (KG)
APLANG03	900	400	800	18,0

\* CAN BE COMBINED WITH ANGUS B





### GRILL | PRAND

✦ CORTEN 2 MM / 3 MM  
MILD STEEL 10 MM



CODE	DIAMETER (MM)	HEIGHT (MM)	WEIGHT (KG)
CGRPRA01	600	750	79,0
CGRPRA02	800	750	98,0
CGRPRA03	1000	750	112,0



### GRILL | POTES

✦ CORTEN 3 MM  
MILD STEEL 10 MM



CODE	LENGTH (MM)	WIDTH (MM)	HEIGHT (MM)	WEIGHT (KG)
CGRPOT01	800	800	860	100,0



### GRILL | STELA

✦ CORTEN 3 MM  
MILD STEEL 10 MM



CODE	LENGTH (MM)	WIDTH (MM)	HEIGHT (MM)	WEIGHT (KG)
CGRSTE01	800	800	920	90,0
CGRSTE02	1000	1000	920	110,0



### GRILL | ARVIDI

✦ CORTEN 3 MM



CODE	LENGTH (MM)	WIDTH (MM)	HEIGHT (MM)	WEIGHT (KG)
CGRARV01	500	500	1090	85,0

\* CONTAINS FUNNEL AND GRATE





### GRILL | **QUALIS STANDARD**

✦ CORTEN 2 MM / 10 MM  
STAINLESS STEEL 3 MM



CODE	LENGTH (MM)	WIDTH (MM)	HEIGHT (MM)	WEIGHT (KG)
CGRQST01	500	900	1070	75,0



### ACCESSORY | **QUALIS COVER**

✦ CORTEN 3 MM



CODE	DIAMETER (MM)	HEIGHT (MM)	WEIGHT (KG)
CACQST01	910	42	12,0



### WHEELS | **QUALIS WHEELS**

✦ GALVANIZED STEEL  4 PCS  
TPE ELASTOMER TREAD



CODE	LENGTH (MM)	WIDTH (MM)	HEIGHT (MM)	WEIGHT (KG)
CACQST04	50	60	71	0,5

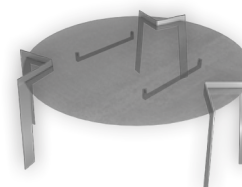


### GRILL | **QUALIS EXCLUSIVE**

✦ CORTEN 2 MM  
SHOU SUGI BAN WOOD



CODE	LENGTH (MM)	WIDTH (MM)	DIAMETER (MM)	HEIGHT (MM)	WEIGHT (KG)
CGRQEX01	2200	600	900	1108	180,0

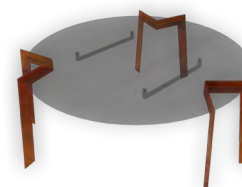


### STAND | **QUALIS STAND**


✦ INOX 3 MM  3 PCS



CODE	LENGTH (MM)	WIDTH (MM)	HEIGHT (MM)	WEIGHT (KG)
CACQST03	175	225	225	1,5



### STAND | **QUALIS STAND**

✦ CORTEN 3 MM  3 PCS

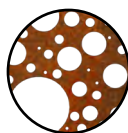


CODE	LENGTH (MM)	WIDTH (MM)	HEIGHT (MM)	WEIGHT (KG)
CACQST02	175	225	225	1,5

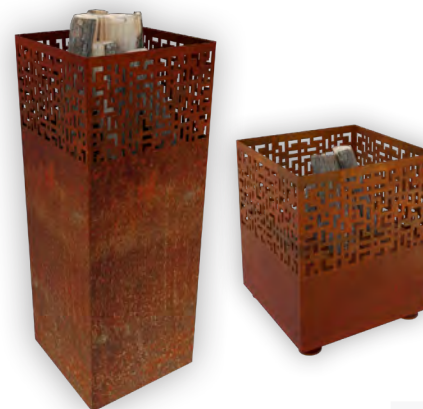


### FIREPLACE | **FOROSA**

✦ CORTEN 3 MM



CODE	LENGTH (MM)	WIDTH (MM)	HEIGHT (MM)	WEIGHT (KG)
CFIFOR01	400	400	1000	45,0
CFIFOR02	400	400	450	20,0



### FIREPLACE | **PAVERT**

✦ CORTEN 3 MM



CODE	LENGTH (MM)	WIDTH (MM)	HEIGHT (MM)	WEIGHT (KG)
CFIPAV01	400	400	1000	45,0
CFIPAV02	400	400	450	20,0

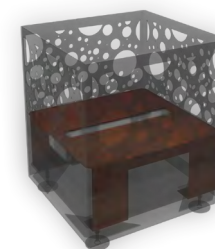


### FIREPLACE | **TURIDO**

✦ CORTEN 3 MM



CODE	LENGTH (MM)	WIDTH (MM)	HEIGHT (MM)	WEIGHT (KG)
CFITUR01	400	400	1000	45,0
CFITUR02	400	400	450	20,0



### BIO | **CONTI**

✦ CORTEN 2 MM



CODE	LENGTH (MM)	WIDTH (MM)	HEIGHT (MM)	WEIGHT (KG)
CACBIO01	390	390	165	8,0

\* BIO INSERT FOR FIREPLACES FOROSA, TURIDO, PAVERT





### FIREPLACE | PERO

✦ CORTEN 3 MM



CODE	DIAMETER (MM)	HEIGHT (MM)	WEIGHT (KG)
CFIPER01	600	80	6,0
CFIPER02	800	107	12,0
CFIPER03	1000	134	20,0
CFIPER04	1200	161	37,6
CFIPER05	1500	201	59,2

\* CAN BE COMBINED WITH BASE AND BOWL GRATE

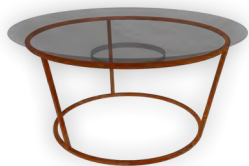


### ACCESSORY | BOWL GRATE

✦ BOILER PLATE 4 MM



CODE	DIAMETER (MM)	HEIGHT (MM)	WEIGHT (KG)
SACBOW01	600	4	6,0
SACBOW02	800	4	11,0
SACBOW03	1000	4	18,0
SACBOW04	1200	4	25,0
SACBOW05	1500	4	40,0



### BASE | RIDO

✦ MILD STEEL ROD 8 MM



CODE	DIAMETER (MM)	HEIGHT (MM)	WEIGHT (KG)
CBRRID01	500	250	1,5
CBRRID02	700	250	2,0
CBRRID03	900	250	3,0

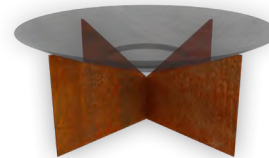


### BASE | TRESTO

✦ CORTEN 4 MM



CODE	LENGTH (MM)	WIDTH (MM)	HEIGHT (MM)	WEIGHT (KG)
CBRTRE01	500	500	220	3,0
CBRTRE02	900	900	250	4,0
CBRTRE03	1200	1200	250	6,0

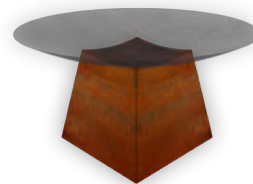


### BASE | WINDI

✦ CORTEN 3 MM



CODE	LENGTH (MM)	WIDTH (MM)	HEIGHT (MM)	WEIGHT (KG)
CBRWIN01	520	520	220	4,0
CBRWIN02	700	700	240	6,0
CBRWIN03	850	850	270	8,0
CBRWIN04	1050	1050	300	10,0
CBRWIN05	1300	1300	340	14,0



### BASE | SUBO

✦ CORTEN 2 MM



CODE	LENGTH (MM)	WIDTH (MM)	HEIGHT (MM)	WEIGHT (KG)
CBRSUB01	350	350	300	6,0
CBRSUB02	500	500	423	12,0
CBRSUB03	650	650	545	20,0



### TABLE | MENSA

✦ CORTEN 2 MM



CODE	LENGTH (MM)	WIDTH (MM)	HEIGHT (MM)	WEIGHT (KG)
CTAMEN01	300	300	900	27,0
CTAMEN02	300	300	700	22,0
CTAMEN03	300	300	500	17,0
CTAMEN04	400	400	1000	35,0
CTAMEN05	400	400	800	30,0
CTAMEN06	500	500	800	37,0
CTAMEN07	500	500	1000	44,0



### TABLE | SOLIDUM

✦ CORTEN 2 MM



CODE	LENGTH (MM)	WIDTH (MM)	HEIGHT (MM)	WEIGHT (KG)
CTASOL01	300	300	900	20,0
CTASOL02	300	300	700	17,0
CTASOL03	300	300	500	13,0
CTASOL04	400	400	1000	31,0
CTASOL05	400	400	800	26,0
CTASOL06	500	500	800	29,0
CTASOL07	500	500	1000	39,0



### FIREPLACE | **MAGNA**

✦ CORTEN 3 MM



CODE	LENGTH (MM)	WIDTH (MM)	HEIGHT (MM)	WEIGHT (KG)
CFIMAG01	800	800	260	23,0



### FIREPLACE | **FLAMA**

✦ CORTEN 3 MM



CODE	LENGTH (MM)	WIDTH (MM)	HEIGHT (MM)	WEIGHT (KG)
CFIFLA01	1000	1000	280	60,0
CFIFLA02	1200	1200	280	76,0
CFIFLA03	1400	1400	280	96,0
CFIFLA04	1500	800	280	70,0



### FIREPLACE | **MINIMA**

✦ CORTEN 5 MM



CODE	LENGTH (MM)	WIDTH (MM)	HEIGHT (MM)	WEIGHT (KG)
CFIMIN01	500	500	200	21,0



### FIREPLACE | **DIUM**

✦ CORTEN 3 MM



CODE	LENGTH (MM)	WIDTH (MM)	HEIGHT (MM)	WEIGHT (KG)
CFIDIU01	800	800	260	18,0
CFIDIU02	1000	1000	230	23,0



### FIREPLACE | **TORO**

✦ CORTEN 3 MM



CODE	DIAMETER (MM)	HEIGHT (MM)	WEIGHT (KG)
CFITOR01	1000	280	44,0
CFITOR02	1250	280	59,0



### FIREPLACE | **PYRAMIS**

✦ CORTEN 3 MM



CODE	LENGTH (MM)	WIDTH (MM)	HEIGHT (MM)	WEIGHT (KG)
CFIPYR01	350	350	1150	35,0





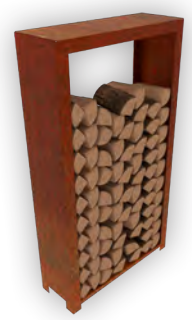
### WOODSHED | LIGNUM

✚ CORTEN 2 MM



CODE	LENGTH (MM)	WIDTH (MM)	HEIGHT (MM)	WEIGHT (KG)
CWSLIG01	500	385	1500	34,0
CWSLIG02	1000	385	1000	34,0
CWSLIG03	1000	385	1500	42,0
CWSLIG04	1000	385	2000	51,0
CWSLIG05	1500	385	500	34,0
CWSLIG06	1500	385	1500	51,0
CWSLIG07	1500	385	2000	58,0

WITH BACK PANEL ON REQUEST



### WOODSHED | JARDI

✚ CORTEN 3 MM



CODE	LENGTH (MM)	WIDTH (MM)	HEIGHT (MM)	WEIGHT (KG)
CWSJAR01	1000	550	1800	89,0
CWSJAR02	1000	400	1800	72,0
CWSJAR03	1000	350	1800	62,0
CWSJAR04	1200	550	1000	70,0
CWSJAR05	1200	350	1000	50,0
CWSJAR06	2000	550	1800	121,0
CWSJAR07	2000	350	1800	85,0

WITH BACK PANEL ON REQUEST

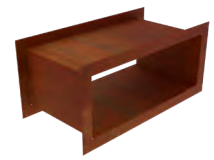


### ADORNMENT | CIRCULU

✚ CORTEN 2 MM



CODE	DIAMETER (MM)	HEIGHT (MM)	WEIGHT (KG)
CADCIR01	390	380	15,0

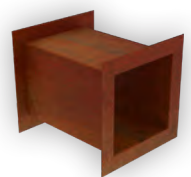


### ADORNMENT | GEMITUS

✚ CORTEN 2 MM



CODE	LENGTH (MM)	WIDTH (MM)	HEIGHT (MM)	WEIGHT (KG)
CADGEM01	780	350	380	17,0
CADGEM02	1480	380	380	27,0



### ADORNMENT | FORTITO

✚ CORTEN 2 MM



CODE	LENGTH (MM)	WIDTH (MM)	HEIGHT (MM)	WEIGHT (KG)
CADFOR01	350	350	380	10,0



### ADORNMENT | MEUM

✚ CORTEN 2 MM



CODE	LENGTH (MM)	WIDTH (MM)	HEIGHT (MM)	WEIGHT (KG)
CADMEU01	600	540	380	10,0







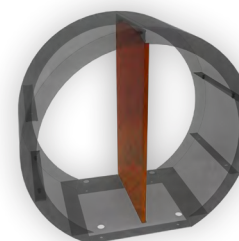
### WOODSHED | TUROS

✦ CORTEN 2 MM



CODE	LENGTH (MM)	WIDTH (MM)	HEIGHT (MM)	WEIGHT (KG)
CWSTUR01	800	385	750	21,0
CWSTUR02	1200	385	1150	35,0
CWSTUR03	1600	385	1150	45,0

\* CAN BE COMBINED WITH GRADIO AND DERIO

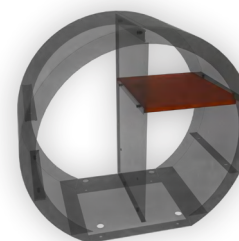


### ACCESSORY | GRADIO

✦ CORTEN 2 MM



CODE	LENGTH (MM)	WIDTH (MM)	HEIGHT (MM)	WEIGHT (KG)
CWGRA01	380	14	690	4,0
CWGRA02	380	14	1060	6,0
CWGRA03	380	14	1435	10,0



### ACCESSORY | DERIO

✦ CORTEN 2 MM



CODE	LENGTH (MM)	WIDTH (MM)	HEIGHT (MM)	WEIGHT (KG)
CWDER01	365	375	14	2,0
CWDER02	565	375	14	3,0
CWDER03	750	375	14	4,0





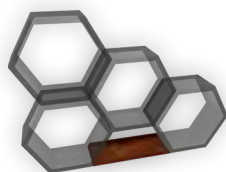
### WOODSHED | MEVUS

✦ CORTEN 2 MM



CODE	LENGTH (MM)	WIDTH (MM)	HEIGHT (MM)	WEIGHT (KG)
CWSMEV01	600	400	600	20,0

\* CAN BE COMBINED WITH CONNECTOR, XINES, WAVET

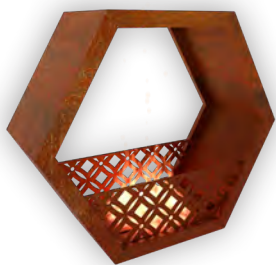


### ACCESSORY | CONNECTOR

✦ CORTEN 2 MM



CODE	LENGTH (MM)	WIDTH (MM)	HEIGHT (MM)	WEIGHT (KG)
CWSMCO01	385	920	50	8,0



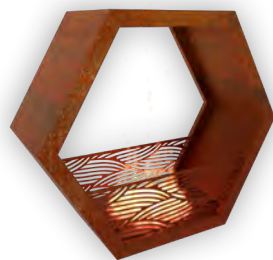
### BIO | XINES

✦ CORTEN 2 MM



CODE	LENGTH (MM)	WIDTH (MM)	HEIGHT (MM)	WEIGHT (KG)
CBIXIN01	600	400	600	35,0

\* CAN BE COMBINED WITH MEVUS



### BIO | WAVET

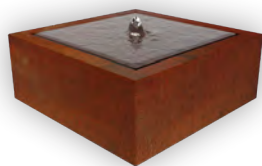
✦ CORTEN 2 MM



CODE	LENGTH (MM)	WIDTH (MM)	HEIGHT (MM)	WEIGHT (KG)
CBIWAV01	600	400	600	35,0

\* CAN BE COMBINED WITH MEVUS





### FOUNTAIN | **SOMNI**

✚ CORTEN 3 MM / 4 MM



CODE	LENGTH (MM)	WIDTH (MM)	HEIGHT (MM)	WEIGHT (KG)	ACCESSORIES
CFOSOM01	600	600	700	40,0	ACCWAT01
CFOSOM02	600	600	400	30,0	ACCWAT01
CFOSOM03	800	800	400	50,0	ACCWAT01
CFOSOM04	1000	1000	400	88,0	ACCWAT01
CFOSOM05	1200	1200	400	115,0	ACCWAT01
CFOSOM06	3000	1200	400	251,0	ACCWAT03
CFOSOM07	3000	1000	400	228,0	ACCWAT03
CFOSOM08	3000	800	400	200,0	ACCWAT03
CFOSOM09	4000	1500	400	371,0	ACCWAT04
CFOSOM10	4000	1000	400	290,0	ACCWAT04
CFOSOM11	5000	1500	400	452,0	ACCWAT05
CFOSOM12	5000	1000	400	355,0	ACCWAT05



### FOUNTAIN | **CASCADE**

✚ CORTEN 4 MM



CODE	LENGTH (MM)	WIDTH (MM)	HEIGHT (MM)	WEIGHT (KG)
CFOCAS01	2200	1350	1300	229,0



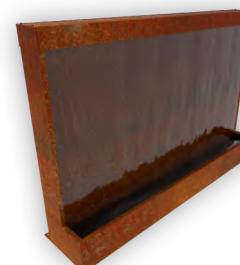
### FOUNTAIN | **WEFE**

✚ CORTEN 2 MM



CODE	LENGTH (MM)	WIDTH (MM)	HEIGHT (MM)	WEIGHT (KG)	ACCESSORIES
CFOWEF01	1000	250	1600	70,0	ACCWEF02
CFOWEF02	1000	250	1200	56,0	ACCWEF01
CFOWEF03	1250	250	1600	85,0	ACCWEF02
CFOWEF04	1250	250	1200	62,0	ACCWEF02
CFOWEF05	1500	250	1200	73,0	ACCWEF03
CFOWEF06	2000	250	1200	98,0	ACCWEF03
CFOWEF07	2500	250	1200	120,0	ACCWEF03
CFOWEF08	3000	250	1200	142,0	ACCWEF03

\* CAN BE COMBINED WITH LACUS



### FOUNTAIN | **CONSILI**

✚ CORTEN 2 MM



CODE	LENGTH (MM)	WIDTH (MM)	HEIGHT (MM)	WEIGHT (KG)	ACCESSORIES
CFOCON01	750	600	1800	110,0	ACCCON01
CFOCON02	1500	600	1800	180,0	ACCCON02
CFOCON03	2700	600	1800	285,0	ACCCON03





## FOUNTAIN | RIPLE

☞ CORTEN 3 MM



CODE	DIAMETER (MM)	HEIGHT (MM)	WEIGHT (KG)	ACCESSORIES
CFORIP01	500	500	34,0	ACCWAT01
CFORIP02	1000	700	98,0	ACCWAT01
CFORIP03	1000	500	86,0	ACCWAT01
CFORIP04	1200	700	127,0	ACCWAT01
CFORIP05	1200	500	120,0	ACCWAT01
CFORIP06	1500	500	158,0	ACCWAT01



## POND | ROTORO

☞ CORTEN 3 MM



CODE	DIAMETER (MM)	HEIGHT (MM)	WEIGHT (KG)
CPOROT01	1000	500	68,0
CPOROT02	1500	500	116,0
CPOROT03	2000	500	174,0
CPOROT04	2500	500	241,0





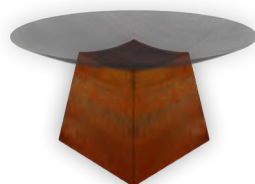
### POND | PIDUS

♂ CORTEN 2 MM



CODE	DIAMETER (MM)	HEIGHT (MM)	WEIGHT (KG)
CPOPID01	600	80	6,0
CPOPID02	800	107	12,0
CPOPID03	1000	134	20,0
CPOPID04	1200	161	38,0
CPOPID05	1500	201	60,0

\* CAN BE COMBINED WITH BASE

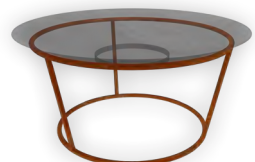


### BASE | SUBO

♂ CORTEN 2 MM



CODE	LENGTH (MM)	WIDTH (MM)	HEIGHT (MM)	WEIGHT (KG)
CBRSUB01	350	350	300	6,0
CBRSUB02	500	500	423	12,0
CBRSUB03	650	650	545	20,0

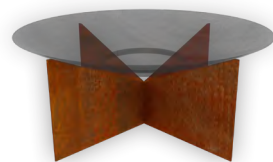


### BASE | RIDO

♂ MILD STEEL ROD 8 MM



CODE	DIAMETER (MM)	HEIGHT (MM)	WEIGHT (KG)
CBRRID01	500	250	1,5
CBRRID02	700	250	2,0
CBRRID03	900	250	3,0



### BASE | WINDI

♂ CORTEN 3 MM



CODE	LENGTH (MM)	WIDTH (MM)	HEIGHT (MM)	WEIGHT (KG)
CBRWIN01	520	520	220	4,0
CBRWIN02	700	700	240	6,0
CBRWIN03	850	850	270	8,0
CBRWIN04	1050	1050	300	10,0
CBRWIN05	1300	1300	340	14,0



### TABLE | SOLIDUM

♂ CORTEN 2 MM



CODE	LENGTH (MM)	WIDTH (MM)	HEIGHT (MM)	WEIGHT (KG)
CTASOLO1	300	300	900	20,0
CTASOLO2	300	300	700	17,0
CTASOLO3	300	300	500	13,0
CTASOLO4	400	400	1000	31,0
CTASOLO5	400	400	800	26,0
CTASOLO6	500	500	800	29,0
CTASOLO7	500	500	1000	39,0



### BASE | TRESTO

♂ CORTEN 4 MM



CODE	LENGTH (MM)	WIDTH (MM)	HEIGHT (MM)	WEIGHT (KG)
CBRTRE01	500	500	220	3,0
CBRTRE02	900	900	250	4,0
CBRTRE03	1200	1200	250	6,0



### TABLE | MENSA

♂ CORTEN 2 MM



CODE	LENGTH (MM)	WIDTH (MM)	HEIGHT (MM)	WEIGHT (KG)
CTAMEN01	300	300	900	27,0
CTAMEN02	300	300	700	22,0
CTAMEN03	300	300	500	17,0
CTAMEN04	400	400	1000	35,0
CTAMEN05	400	400	800	30,0
CTAMEN06	500	500	800	37,0
CTAMEN07	500	500	1000	44,0





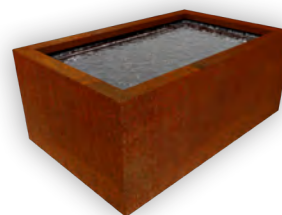
## FOUNTAIN | SUSCEPT

✦ CORTEN 2 MM



CODE	LENGTH (MM)	WIDTH (MM)	HEIGHT (MM)	WEIGHT (KG)	ACCESSORIES
CFOSUS01	1000	250	1000	57,0	ACCSUS02
CFOSUS02	1000	250	600	37,0	ACCSUS01
CFOSUS03	1250	250	1000	69,0	ACCSUS02
CFOSUS04	1250	250	600	45,0	ACCSUS02
CFOSUS05	1500	250	600	50,0	ACCSUS03
CFOSUS06	2000	250	600	76,0	ACCSUS03
CFOSUS07	2500	250	600	93,0	ACCSUS03
CFOSUS08	3000	250	600	109,0	ACCSUS03

\* CAN BE COMBINED WITH LACUS



## POND | LACUS

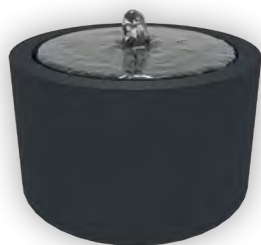
✦ CORTEN 3 MM



CODE	LENGTH (MM)	WIDTH (MM)	HEIGHT (MM)	WEIGHT (KG)
CPOLAC01	1000	1000	500	87,0
CPOLAC02	1250	800	500	73,0
CPOLAC03	1500	1000	500	114,0
CPOLAC04	2000	1000	600	133,0
CPOLAC05	2000	1000	500	142,0
CPOLAC06	2500	1250	600	206,0
CPOLAC07	2500	1000	500	170,0
CPOLAC08	3000	2000	600	319,0
CPOLAC09	3000	1500	600	266,0
CPOLAC10	3000	1000	500	197,0
CPOLAC11	3500	1000	500	225,0
CPOLAC12	4000	1000	500	253,0

\* CAN BE COMBINED WITH SUSCEPT, WEFE



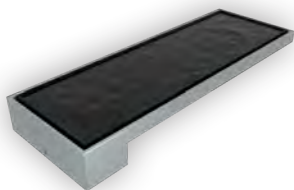


### FOUNTAIN | RIPLE

ALUMINUM 3 MM



CODE	DIAMETER (MM)	HEIGHT (MM)	WEIGHT (KG)	ACCESSORIES
AFORIP01	1000	700	33,0	ACCWAT01
AFORIP02	1200	700	43,0	ACCWAT01



### POND | AMNIS

STAINLESS STEEL 2 MM  
ALUMINUM 2 MM



CODE	LENGTH (MM)	WIDTH (MM)	HEIGHT (MM)	WEIGHT (KG)
APOAMN01	2600	900	300	90,0

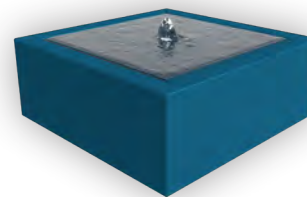


### FOUNTAIN | CASCADE

ALUMINUM 4 MM



CODE	LENGTH (MM)	WIDTH (MM)	HEIGHT (MM)	WEIGHT (KG)
AFOCAS01	2200	1350	1300	128,0



### FOUNTAIN | SOMNI

ALUMINUM 3 MM / 4 MM



CODE	LENGTH (MM)	WIDTH (MM)	HEIGHT (MM)	WEIGHT (KG)	ACCESSORIES
AFOSOM01	600	600	700	23,0	ACCWAT01
AFOSOM02	600	600	400	17,0	ACCWAT01
AFOSOM03	800	800	400	26,0	ACCWAT01
AFOSOM04	1000	1000	400	36,0	ACCWAT01
AFOSOM05	1200	1200	400	50,0	ACCWAT01
AFOSOM06	3000	1200	400	88,0	ACCWAT03
AFOSOM07	3000	1000	400	79,0	ACCWAT03
AFOSOM08	3000	800	400	70,0	ACCWAT03
AFOSOM09	4000	1500	400	130,0	ACCWAT04
AFOSOM10	4000	1000	400	103,0	ACCWAT04



### FOUNTAIN | WEFE

ALUMINUM 3 MM



CODE	LENGTH (MM)	WIDTH (MM)	HEIGHT (MM)	WEIGHT (KG)	ACCESSORIES
AFOWEF01	1000	250	1600	36,0	ACCWEF02
AFOWEF02	1000	250	1200	29,0	ACCWEF01
AFOWEF03	1250	250	1600	44,0	ACCWEF02
AFOWEF04	1250	250	1200	32,0	ACCWEF02
AFOWEF05	1500	250	1200	37,0	ACCWEF03
AFOWEF06	2000	250	1200	52,0	ACCWEF03
AFOWEF07	2500	250	1200	64,0	ACCWEF03
AFOWEF08	3000	250	1200	72,0	ACCWEF03

\* CAN BE COMBINED WITH LACUS





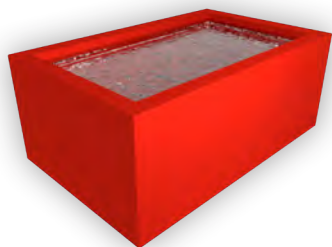
## FOUNTAIN | SUSCEPIT

ALUMINUM 3 MM



CODE	LENGTH (MM)	WIDTH (MM)	HEIGHT (MM)	WEIGHT (KG)	ACCESSORIES
AFOSUS01	1000	250	1000	30,0	ACCSUS02
AFOSUS02	1000	250	600	19,0	ACCSUS01
AFOSUS03	1250	250	1000	36,0	ACCSUS02
AFOSUS04	1250	250	600	23,0	ACCSUS02
AFOSUS05	1500	250	600	26,0	ACCSUS03
AFOSUS06	2000	250	600	40,0	ACCSUS03
AFOSUS07	2500	250	600	49,0	ACCSUS03
AFOSUS08	3000	250	600	58,0	ACCSUS03

\* CAN BE COMBINED WITH LACUS



## POND | LACUS

ALUMINUM 4 MM



CODE	LENGTH (MM)	WIDTH (MM)	HEIGHT (MM)	WEIGHT (KG)
APOLAC01	1250	800	500	34,0
APOLAC02	1500	1000	500	45,0
APOLAC03	2000	1000	600	62,0
APOLAC04	2500	1250	600	95,0
APOLAC05	3000	2000	600	146,0
APOLAC06	3000	1500	600	122,0

\* CAN BE COMBINED WITH SUSCEPIT. WEFE





**WALL | WRESE**



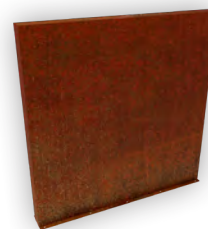
CODE	MATERIAL	LENGTH (MM)	WIDTH (MM)	HEIGHT (MM)	WEIGHT (KG)
CWAWRE01	corten 2 mm	2000	150	1500	102,0



**WALL | CORIS**



CODE	MATERIAL	LENGTH (MM)	WIDTH (MM)	HEIGHT (MM)	WEIGHT (KG)
CWACOR01	corten 2 mm	2000	150	1500	92,0



**WALL | SEDE**



CODE	MATERIAL	LENGTH (MM)	WIDTH (MM)	HEIGHT (MM)	WEIGHT (KG)
CWASED01	corten 2 mm	1000	200	2000	83,6
CWASED02	corten 2 mm	1000	200	1500	64,4
CWASED03	corten 2 mm	1000	200	1000	45,2
CWASED04	corten 2 mm	1000	150	2000	78,0
CWASED05	corten 2 mm	1000	150	1350	54,0
CWASED06	corten 2 mm	1000	150	1000	41,0
CWASED07	corten 2 mm	1000	150	800	34,0
CWASED08	corten 2 mm	1500	200	2000	118,8
CWASED09	corten 2 mm	1500	200	1500	91,6
CWASED10	corten 2 mm	1500	200	1000	64,4
CWASED11	corten 2 mm	2000	200	2000	153,9
CWASED12	corten 2 mm	2000	200	1500	118,7
CWASED13	corten 2 mm	2000	200	1000	83,5
CWASED14	corten 2 mm	2000	150	2000	146,0
CWASED15	corten 2 mm	2000	150	1350	101,0
CWASED16	corten 2 mm	2000	150	1000	77,0
CWASED17	corten 2 mm	2000	150	800	64,0
CWASED18	corten 2 mm	2500	200	2000	189,0
CWASED19	corten 2 mm	2500	200	1500	145,8
CWASED20	corten 2 mm	2500	200	1000	102,6
CWASED21	corten 2 mm	3000	200	2000	224,1
CWASED22	corten 2 mm	3000	200	1500	172,9
CWASED23	corten 2 mm	3000	200	1000	121,7
CWASED24	corten 2 mm	3000	150	2000	214,0
CWASED25	corten 2 mm	3000	150	1000	113,0
CWASED26	corten 2 mm	3000	150	800	93,0
CWASED27	corten 2 mm	4000	150	2000	282,0
CWASED28	corten 2 mm	4000	150	1000	149,0

\* CAN BE CUTTED WITH OCULUS OR ANGULUS





### CUT-OUT | ANGULUS

CODE	MATERIAL	LENGTH (MM)	WIDTH (MM)	HEIGHT (MM)
CWAANG01	corten 2 mm	1000	100	200/150
CWAANG02	corten 2 mm	1250	100	200/150
CWAANG03	corten 2 mm	1500	100	200/150

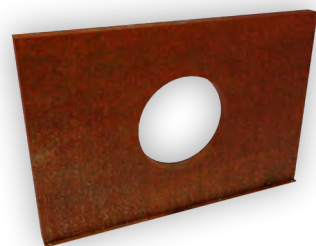
\* CUT-OUTS CAN BE COMBINED WITH SEDE WALLS



### WALL | PORTA



CODE	MATERIAL	LENGTH (MM)	WIDTH (MM)	HEIGHT (MM)	WEIGHT (KG)
CWAPOR01	corten 2 mm	3500	150	2300	173,0



### CUT-OUT | OCULUS

CODE	MATERIAL	DIAMETER (MM)	HEIGHT (MM)
CWAOCU01	corten 2 mm	500	200/150
CWAOCU02	corten 2 mm	750	200/150
CWAOCU03	corten 2 mm	1000	200/150

\* CUT-OUTS CAN BE COMBINED WITH SEDE WALLS



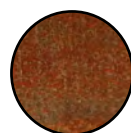
### PANEL | POST



CODE	MATERIAL	LENGTH (MM)	WIDTH (MM)	HEIGHT (MM)	WEIGHT (KG)
CPAPOS01	corten 2 mm	2500	50	70	9,0
GPAOS01	galvanized steel 2 mm + RAL	2500	50	70	4,0
APAPOS01	aluminum 3 mm + RAL	2500	50	70	9,0

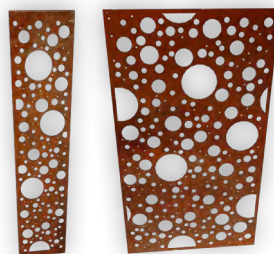


PANEL | **MONUS**

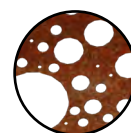


CODE	MATERIAL	LENGTH (MM)	WIDTH (MM)	HEIGHT (MM)	WEIGHT (KG)
CPAMON01	corten 2 mm	450	50	1800	18,0
CPAMON02	corten 2 mm	450	50	2000	21,0
CPAMON03	corten 2 mm	900	50	1800	33,0
CPAMON04	corten 2 mm	900	50	2000	36,0
APAMON01	aluminum 3 mm	450	50	1800	7,0
APAMON02	aluminum 3 mm	450	50	2000	8,0
APAMON03	aluminum 3 mm	900	50	1800	13,0
APAMON04	aluminum 3 mm	900	50	2000	14,0
GPAMON01	steel 3 mm + zinc primer	450	50	1800	18,0
GPAMON02	steel 3 mm + zinc primer	450	50	2000	21,0
GPAMON03	steel 3 mm + zinc primer	900	50	1800	33,0
GPAMON04	steel 3 mm + zinc primer	900	50	2000	36,0

\* STEEL + ZINC PANELS ARE ONLY SUITABLE FOR INTERIORS



PANEL | **FOROSA**



CODE	MATERIAL	LENGTH (MM)	WIDTH (MM)	HEIGHT (MM)	WEIGHT (KG)
CPAFOR01	corten 2 mm	450	50	1800	18,0
CPAFOR02	corten 2 mm	450	50	2000	21,0
CPAFOR03	corten 2 mm	900	50	1800	33,0
CPAFOR04	corten 2 mm	900	50	2000	36,0
APAFOR01	aluminum 3 mm	450	50	1800	7,0
APAFOR02	aluminum 3 mm	450	50	2000	8,0
APAFOR03	aluminum 3 mm	900	50	1800	13,0
APAFOR04	aluminum 3 mm	900	50	2000	14,0
GPAFOR01	steel 3 mm + zinc primer	450	50	1800	18,0
GPAFOR02	steel 3 mm + zinc primer	450	50	2000	21,0
GPAFOR03	steel 3 mm + zinc primer	900	50	1800	33,0
GPAFOR04	steel 3 mm + zinc primer	900	50	2000	36,0

\* STEEL + ZINC PANELS ARE ONLY SUITABLE FOR INTERIORS



PANEL | **FLOMULA**



CODE	MATERIAL	LENGTH (MM)	WIDTH (MM)	HEIGHT (MM)	WEIGHT (KG)
CPAFLO01	corten 2 mm	450	50	1800	18,0
CPAFLO02	corten 2 mm	450	50	2000	21,0
CPAFLO03	corten 2 mm	900	50	1800	33,0
CPAFLO04	corten 2 mm	900	50	2000	36,0
APAFLO01	aluminum 3 mm	450	50	1800	7,0
APAFLO02	aluminum 3 mm	450	50	2000	8,0
APAFLO03	aluminum 3 mm	900	50	1800	13,0
APAFLO04	aluminum 3 mm	900	50	2000	14,0
GPAFLO01	steel 3 mm + zinc primer	450	50	1800	18,0
GPAFLO02	steel 3 mm + zinc primer	450	50	2000	21,0
GPAFLO03	steel 3 mm + zinc primer	900	50	1800	33,0
GPAFLO04	steel 3 mm + zinc primer	900	50	2000	36,0

\* STEEL + ZINC PANELS ARE ONLY SUITABLE FOR INTERIORS





PANEL | RAMO



PANEL | LOVEUM



PANEL | DANVEN



CODE	MATERIAL	LENGTH (MM)	WIDTH (MM)	HEIGHT (MM)	WEIGHT (KG)
CPARAM01	corten 2 mm	450	50	1800	18,0
CPARAM02	corten 2 mm	450	50	2000	21,0
CPARAM03	corten 2 mm	900	50	1800	33,0
CPARAM04	corten 2 mm	900	50	2000	36,0
APARAM01	aluminum 3 mm	450	50	1800	7,0
APARAM02	aluminum 3 mm	450	50	2000	8,0
APARAM03	aluminum 3 mm	900	50	1800	13,0
APARAM04	aluminum 3 mm	900	50	2000	14,0
GPARAM01	steel 3 mm + zinc primer	450	50	1800	18,0
GPARAM02	steel 3 mm + zinc primer	450	50	2000	21,0
GPARAM03	steel 3 mm + zinc primer	900	50	1800	33,0
GPARAM04	steel 3 mm + zinc primer	900	50	2000	36,0

\* STEEL + ZINC PANELS ARE ONLY SUITABLE FOR INTERIORS

CODE	MATERIAL	LENGTH (MM)	WIDTH (MM)	HEIGHT (MM)	WEIGHT (KG)
CPALOV01	corten 2 mm	450	50	1800	18,0
CPALOV02	corten 2 mm	450	50	2000	21,0
CPALOV03	corten 2 mm	900	50	1800	33,0
CPALOV04	corten 2 mm	900	50	2000	36,0
APALOV01	aluminum 3 mm	450	50	1800	7,0
APALOV02	aluminum 3 mm	450	50	2000	8,0
APALOV03	aluminum 3 mm	900	50	1800	13,0
APALOV04	aluminum 3 mm	900	50	2000	14,0
GPALOV01	steel 3 mm + zinc primer	450	50	1800	18,0
GPALOV02	steel 3 mm + zinc primer	450	50	2000	21,0
GPALOV03	steel 3 mm + zinc primer	900	50	1800	33,0
GPALOV04	steel 3 mm + zinc primer	900	50	2000	36,0

\* STEEL + ZINC PANELS ARE ONLY SUITABLE FOR INTERIORS

CODE	MATERIAL	LENGTH (MM)	WIDTH (MM)	HEIGHT (MM)	WEIGHT (KG)
CPADAN01	corten 2 mm	450	50	1800	18,0
CPADAN02	corten 2 mm	450	50	2000	21,0
CPADAN03	corten 2 mm	900	50	1800	33,0
CPADAN04	corten 2 mm	900	50	2000	36,0
APADAN01	aluminum 3 mm	450	50	1800	7,0
APADAN02	aluminum 3 mm	450	50	2000	8,0
APADAN03	aluminum 3 mm	900	50	1800	13,0
APADAN04	aluminum 3 mm	900	50	2000	14,0
GPADAN01	steel 3 mm + zinc primer	450	50	1800	18,0
GPADAN02	steel 3 mm + zinc primer	450	50	2000	21,0
GPADAN03	steel 3 mm + zinc primer	900	50	1800	33,0
GPADAN04	steel 3 mm + zinc primer	900	50	2000	36,0

\* STEEL + ZINC PANELS ARE ONLY SUITABLE FOR INTERIORS



PANEL | THIR



CODE	MATERIAL	LENGTH (MM)	WIDTH (MM)	HEIGHT (MM)	WEIGHT (KG)
CPATHI01	corten 2 mm	450	50	1800	18,0
CPATHI02	corten 2 mm	450	50	2000	21,0
CPATHI03	corten 2 mm	900	50	1800	33,0
CPATHI04	corten 2 mm	900	50	2000	36,0
APATHI01	aluminum 3 mm	450	50	1800	7,0
APATHI02	aluminum 3 mm	450	50	2000	8,0
APATHI03	aluminum 3 mm	900	50	1800	13,0
APATHI04	aluminum 3 mm	900	50	2000	14,0
GPATHI01	steel 3 mm + zinc primer	450	50	1800	18,0
GPATHI02	steel 3 mm + zinc primer	450	50	2000	21,0
GPATHI03	steel 3 mm + zinc primer	900	50	1800	33,0
GPATHI04	steel 3 mm + zinc primer	900	50	2000	36,0

\* STEEL + ZINC PANELS ARE ONLY SUITABLE FOR INTERIORS

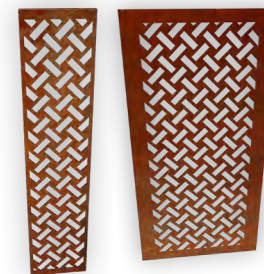


PANEL | STAVIU



CODE	MATERIAL	LENGTH (MM)	WIDTH (MM)	HEIGHT (MM)	WEIGHT (KG)
CPASTA01	corten 2 mm	450	50	1800	18,0
CPASTA02	corten 2 mm	450	50	2000	21,0
CPASTA03	corten 2 mm	900	50	1800	33,0
CPASTA04	corten 2 mm	900	50	2000	36,0
APASTA01	aluminum 3 mm	450	50	1800	7,0
APASTA02	aluminum 3 mm	450	50	2000	8,0
APASTA03	aluminum 3 mm	900	50	1800	13,0
APASTA04	aluminum 3 mm	900	50	2000	14,0
GPASTA01	steel 3 mm + zinc primer	450	50	1800	18,0
GPASTA02	steel 3 mm + zinc primer	450	50	2000	21,0
GPASTA03	steel 3 mm + zinc primer	900	50	1800	33,0
GPASTA04	steel 3 mm + zinc primer	900	50	2000	36,0

\* STEEL + ZINC PANELS ARE ONLY SUITABLE FOR INTERIORS



PANEL | MEST



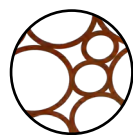
CODE	MATERIAL	LENGTH (MM)	WIDTH (MM)	HEIGHT (MM)	WEIGHT (KG)
CPAMES01	corten 2 mm	450	50	1800	18,0
CPAMES02	corten 2 mm	450	50	2000	21,0
CPAMES03	corten 2 mm	900	50	1800	33,0
CPAMES04	corten 2 mm	900	50	2000	36,0
APAMES01	aluminum 3 mm	450	50	1800	7,0
APAMES02	aluminum 3 mm	450	50	2000	8,0
APAMES03	aluminum 3 mm	900	50	1800	13,0
APAMES04	aluminum 3 mm	900	50	2000	14,0
GPAMES01	steel 3 mm + zinc primer	450	50	1800	18,0
GPAMES02	steel 3 mm + zinc primer	450	50	2000	21,0
GPAMES03	steel 3 mm + zinc primer	900	50	1800	33,0
GPAMES04	steel 3 mm + zinc primer	900	50	2000	36,0

\* STEEL + ZINC PANELS ARE ONLY SUITABLE FOR INTERIORS



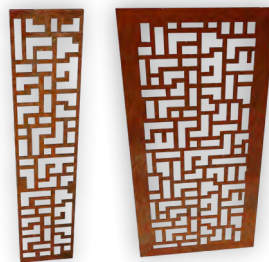


PANEL | **SODI**



CODE	MATERIAL	LENGTH (MM)	WIDTH (MM)	HEIGHT (MM)	WEIGHT (KG)
CPASOD01	corten 2 mm	450	50	1800	18,0
CPASOD02	corten 2 mm	450	50	2000	21,0
CPASOD03	corten 2 mm	900	50	1800	33,0
CPASOD04	corten 2 mm	900	50	2000	36,0
APASOD01	aluminum 3 mm	450	50	1800	7,0
APASOD02	aluminum 3 mm	450	50	2000	8,0
APASOD03	aluminum 3 mm	900	50	1800	13,0
APASOD04	aluminum 3 mm	900	50	2000	14,0
GPASOD01	steel 3 mm + zinc primer	450	50	1800	18,0
GPASOD02	steel 3 mm + zinc primer	450	50	2000	21,0
GPASOD03	steel 3 mm + zinc primer	900	50	1800	33,0
GPASOD04	steel 3 mm + zinc primer	900	50	2000	36,0

\* STEEL + ZINC PANELS ARE ONLY SUITABLE FOR INTERIORS



PANEL | **PAVERT**

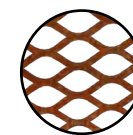


CODE	MATERIAL	LENGTH (MM)	WIDTH (MM)	HEIGHT (MM)	WEIGHT (KG)
CPAPAV01	corten 2 mm	450	50	1800	18,0
CPAPAV02	corten 2 mm	450	50	2000	21,0
CPAPAV03	corten 2 mm	900	50	1800	33,0
CPAPAV04	corten 2 mm	900	50	2000	36,0
APAPAV01	aluminum 3 mm	450	50	1800	7,0
APAPAV02	aluminum 3 mm	450	50	2000	8,0
APAPAV03	aluminum 3 mm	900	50	1800	13,0
APAPAV04	aluminum 3 mm	900	50	2000	14,0
GPAPAV01	steel 3 mm + zinc primer	450	50	1800	18,0
GPAPAV02	steel 3 mm + zinc primer	450	50	2000	21,0
GPAPAV03	steel 3 mm + zinc primer	900	50	1800	33,0
GPAPAV04	steel 3 mm + zinc primer	900	50	2000	36,0

\* STEEL + ZINC PANELS ARE ONLY SUITABLE FOR INTERIORS



PANEL | **HOANUS**



CODE	MATERIAL	LENGTH (MM)	WIDTH (MM)	HEIGHT (MM)	WEIGHT (KG)
CPAHOA01	corten 2 mm	450	50	1800	18,0
CPAHOA02	corten 2 mm	450	50	2000	21,0
CPAHOA03	corten 2 mm	900	50	1800	33,0
CPAHOA04	corten 2 mm	900	50	2000	36,0
APAHOA01	aluminum 3 mm	450	50	1800	7,0
APAHOA02	aluminum 3 mm	450	50	2000	8,0
APAHOA03	aluminum 3 mm	900	50	1800	13,0
APAHOA04	aluminum 3 mm	900	50	2000	14,0
GPAHOA01	steel 3 mm + zinc primer	450	50	1800	18,0
GPAHOA02	steel 3 mm + zinc primer	450	50	2000	21,0
GPAHOA03	steel 3 mm + zinc primer	900	50	1800	33,0
GPAHOA04	steel 3 mm + zinc primer	900	50	2000	36,0

\* STEEL + ZINC PANELS ARE ONLY SUITABLE FOR INTERIORS



CODE	MATERIAL	LENGTH (MM)	WIDTH (MM)	HEIGHT (MM)	WEIGHT (KG)
CPALEA01	corten 2 mm	450	50	1800	18,0
CPALEA02	corten 2 mm	450	50	2000	21,0
CPALEA03	corten 2 mm	900	50	1800	33,0
CPALEA04	corten 2 mm	900	50	2000	36,0
APALEA01	aluminum 3 mm	450	50	1800	7,0
APALEA02	aluminum 3 mm	450	50	2000	8,0
APALEA03	aluminum 3 mm	900	50	1800	13,0
APALEA04	aluminum 3 mm	900	50	2000	14,0
GPALEA01	steel 3 mm + zinc primer	450	50	1800	18,0
GPALEA02	steel 3 mm + zinc primer	450	50	2000	21,0
GPALEA03	steel 3 mm + zinc primer	900	50	1800	33,0
GPALEA04	steel 3 mm + zinc primer	900	50	2000	36,0

\* STEEL + ZINC PANELS ARE ONLY SUITABLE FOR INTERIORS



CODE	MATERIAL	LENGTH (MM)	WIDTH (MM)	HEIGHT (MM)	WEIGHT (KG)
CPAXIN01	corten 2 mm	450	50	1800	18,0
CPAXIN02	corten 2 mm	450	50	2000	21,0
CPAXIN03	corten 2 mm	900	50	1800	33,0
CPAXIN04	corten 2 mm	900	50	2000	36,0
APAXIN01	aluminum 3 mm	450	50	1800	7,0
APAXIN02	aluminum 3 mm	450	50	2000	8,0
APAXIN03	aluminum 3 mm	900	50	1800	13,0
APAXIN04	aluminum 3 mm	900	50	2000	14,0
GPAXIN01	steel 3 mm + zinc primer	450	50	1800	18,0
GPAXIN02	steel 3 mm + zinc primer	450	50	2000	21,0
GPAXIN03	steel 3 mm + zinc primer	900	50	1800	33,0
GPAXIN04	steel 3 mm + zinc primer	900	50	2000	36,0

\* STEEL + ZINC PANELS ARE ONLY SUITABLE FOR INTERIORS



CODE	MATERIAL	LENGTH (MM)	WIDTH (MM)	HEIGHT (MM)	WEIGHT (KG)
CPAWAV01	corten 2 mm	450	50	1800	18,0
CPAWAV02	corten 2 mm	450	50	2000	21,0
CPAWAV03	corten 2 mm	900	50	1800	33,0
CPAWAV04	corten 2 mm	900	50	2000	36,0
APAWAV01	aluminum 3 mm	450	50	1800	7,0
APAWAV02	aluminum 3 mm	450	50	2000	8,0
APAWAV03	aluminum 3 mm	900	50	1800	13,0
APAWAV04	aluminum 3 mm	900	50	2000	14,0
GPAWAV01	steel 3 mm + zinc primer	450	50	1800	18,0
GPAWAV02	steel 3 mm + zinc primer	450	50	2000	21,0
GPAWAV03	steel 3 mm + zinc primer	900	50	1800	33,0
GPAWAV04	steel 3 mm + zinc primer	900	50	2000	36,0

\* STEEL + ZINC PANELS ARE ONLY SUITABLE FOR INTERIORS



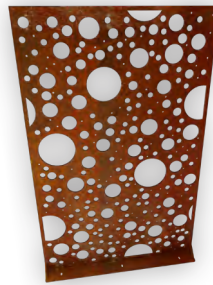


PANEL | CREO



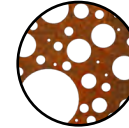
CODE	MATERIAL	LENGTH (MM)	WIDTH (MM)	HEIGHT (MM)	WEIGHT (KG)
CPACRE01	corten 2 mm	450	50	1800	18,0
CPACRE02	corten 2 mm	450	50	2000	21,0
CPACRE03	corten 2 mm	900	50	1800	33,0
CPACRE04	corten 2 mm	900	50	2000	36,0
APACRE01	aluminum 3 mm	450	50	1800	7,0
APACRE02	aluminum 3 mm	450	50	2000	8,0
APACRE03	aluminum 3 mm	900	50	1800	13,0
APACRE04	aluminum 3 mm	900	50	2000	14,0
GPACRE01	steel 3 mm + zinc primer	450	50	1800	18,0
GPACRE02	steel 3 mm + zinc primer	450	50	2000	21,0
GPACRE03	steel 3 mm + zinc primer	900	50	1800	33,0
GPACRE04	steel 3 mm + zinc primer	900	50	2000	36,0

\* STEEL + ZINC PANELS ARE ONLY SUITABLE FOR INTERIORS

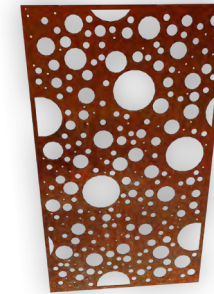


TOTEM | FOROSA

≡≡ CORTEN 6 MM



CODE	LENGTH (MM)	WIDTH (MM)	HEIGHT (MM)	WEIGHT (KG)
CTOFOR01	1000	6	1600	45,0

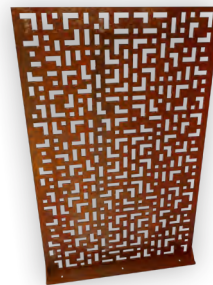


LATTICE | FOROSA

≡≡ CORTEN 2 MM

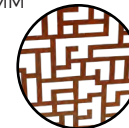


CODE	LENGTH (MM)	WIDTH (MM)	HEIGHT (MM)	WEIGHT (KG)
CLAFOR01	900	2	1600	45,0

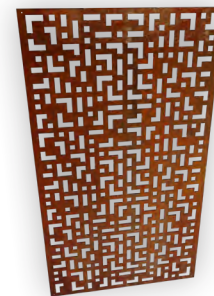


TOTEM | PAVERT

≡≡ CORTEN 6 MM



CODE	LENGTH (MM)	WIDTH (MM)	HEIGHT (MM)	WEIGHT (KG)
CTOPAV01	1000	6	1600	45,0



LATTICE | PAVERT

≡≡ CORTEN 2 MM

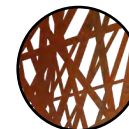


CODE	LENGTH (MM)	WIDTH (MM)	HEIGHT (MM)	WEIGHT (KG)
CLAPAV01	900	2	1600	45,0



TOTEM | TURIDO

≡≡ CORTEN 6 MM

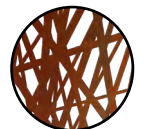


CODE	LENGTH (MM)	WIDTH (MM)	HEIGHT (MM)	WEIGHT (KG)
CTOTU01	1000	6	1600	45,0



LATTICE | TURIDO

≡≡ CORTEN 2 MM



CODE	LENGTH (MM)	WIDTH (MM)	HEIGHT (MM)	WEIGHT (KG)
CLATUR01	900	2	1600	45,0

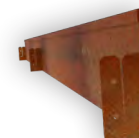


### EDGE | **FLAT**

±± CORTEN 2 / 3 MM



CODE	LENGTH (MM)	WIDTH (MM)	HEIGHT (MM)	WEIGHT (KG)
CEDFLA01	2500	2	150	6,0
CEDFLA02	2500	2	290	11,6
CEDFLA03	2500	3	150	9,0
CEDFLA04	2500	3	290	17,4

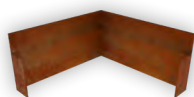


### EDGE | **ROUNDED**

±± CORTEN 2 MM

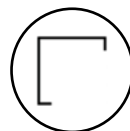


CODE	LENGTH (MM)	WIDTH (MM)	HEIGHT (MM)	WEIGHT (KG)
CEDROU01	2500	2	150	7,2
CEDROU02	2500	2	290	12,8



### INT. CORNER | **FLAT**

±± CORTEN 2 / 3 MM

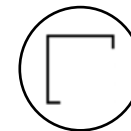


CODE	LENGTH (MM)	WIDTH (MM)	HEIGHT (MM)	WEIGHT (KG)
CECFLA01	300	2	150	1,4
CECFLA02	300	2	290	2,8
CECFLA03	300	3	150	2,2
CECFLA04	300	3	290	4,2

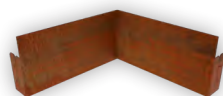


### INT. CORNER | **ROUNDED**

±± CORTEN 2 MM



CODE	LENGTH (MM)	WIDTH (MM)	HEIGHT (MM)	WEIGHT (KG)
CECROU01	300	2	150	1,7
CECROU02	300	2	290	3,1



### EXT. CORNER | **FLAT**

±± CORTEN 2 / 3 MM

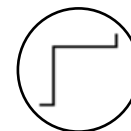


CODE	LENGTH (MM)	WIDTH (MM)	HEIGHT (MM)	WEIGHT (KG)
CECFLA05	300	2	150	1,4
CECFLA06	300	2	290	2,8
CECFLA07	300	3	150	2,2
CECFLA08	300	3	290	4,2



### EXT. CORNER | **ROUNDED**

±± CORTEN 2 MM



CODE	LENGTH (MM)	WIDTH (MM)	HEIGHT (MM)	WEIGHT (KG)
CECROU03	300	2	150	1,7
CECROU04	300	2	290	3,1





### EDGE | U-PROFILE

✦ CORTEN 2 / 3 MM

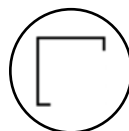


CODE	LENGTH (MM)	WIDTH (MM)	HEIGHT (MM)	WEIGHT (KG)
CEDUPRO1	2500	2	150	8,0
CEDUPRO2	2500	2	290	13,6
CEDUPRO3	2500	3	150	12,0
CEDUPRO4	2500	3	290	20,4

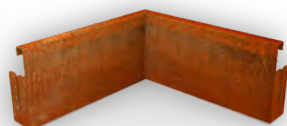


### INT. CORNER | U-PROFILE

✦ CORTEN 2 / 3 MM



CODE	LENGTH (MM)	WIDTH (MM)	HEIGHT (MM)	WEIGHT (KG)
CECUPRO1	300	2	150	1,9
CECUPRO2	300	2	290	3,3
CECUPRO3	300	3	150	2,9
CECUPRO4	300	3	290	4,9

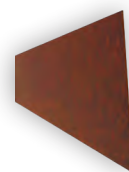


### EXT. CORNER | U-PROFILE

✦ CORTEN 2 / 3 MM



CODE	LENGTH (MM)	WIDTH (MM)	HEIGHT (MM)	WEIGHT (KG)
CECUPRO5	300	2	150	1,9
CECUPRO6	300	2	290	3,3
CECUPRO7	300	3	150	2,9
CECUPRO8	300	3	290	4,9



### EDGE | SIMPLE

✦ CORTEN 2 / 3 MM 10 PCS



CODE	LENGTH (MM)	WIDTH (MM)	HEIGHT (MM)	WEIGHT (KG)
CEDSIM01	2500	2	100	40,0
CEDSIM02	2500	2	150	60,0
CEDSIM03	2500	2	290	116,0
CEDSIM04	2500	3	100	60,0
CEDSIM05	2500	3	150	90,0
CEDSIM06	2500	3	290	174,0



### ACCESSORY | PICKET

✦ CORTEN 2 MM



CODE	LENGTH (MM)	WIDTH (MM)	HEIGHT (MM)	WEIGHT (KG)
CEDPIC01	50	2	500	0,4

\* CAN BE COMBINED WITH FLAT, ROUNDED AND U-PROFILE





### EDGE | FLECTE

✚ CORTEN 1 MM



CODE	LENGTH (MM)	WIDTH (MM)	HEIGHT (MM)	WEIGHT (KG)
CEDFLE01	1490	1	150	2,5
CEDFLE02	1490	1	290	4,0



### CONNECTOR | FLECTE

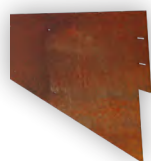
✚ CORTEN 1 MM



CODE	LENGTH (MM)	WIDTH (MM)	HEIGHT (MM)	WEIGHT (KG)
CEDFC001	100	1	145	0,2
CEDFC002	100	1	285	0,3

\* ASSEMBLED USING NAILS, CAN BE BENT





## EDGE | FANIS

♁ CORTEN 3 MM



CODE	LENGTH (MM)	WIDTH (MM)	HEIGHT (MM)	WEIGHT (KG)
CEDFAN01	100	3	150	0,5
CEDFAN02	500	3	150	1,5
CEDFAN03	1000	3	150	3,5
CEDFAN04	2400	3	150	8,0
CEDFAN05	100	3	290	1,0
CEDFAN06	500	3	290	3,0
CEDFAN07	1000	3	290	6,5
CEDFAN08	2400	3	290	16,0



## CONNECTOR | FANIS

♁ CORTEN 2 MM ♁ 2 PCS



CODE	LENGTH (MM)	WIDTH (MM)	HEIGHT (MM)	WEIGHT (KG)
CEDPC001	100	100	150	0,5
CEDPC002	100	100	290	1,0



## ACCESSORY | PICKET

♁ CORTEN 3 MM



CODE	LENGTH (MM)	WIDTH (MM)	HEIGHT (MM)	WEIGHT (KG)
CEDPIC02	400	3	35	0,2
CEDPIC03	600	3	35	0,3

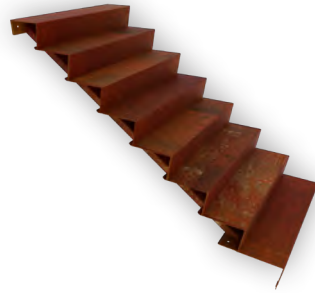
\* CAN BE COMBINED WITH FANIS







photo by The Pot Company



## STAIRS | SCOPUM

☞ CORTEN 3 MM



CODE	STEP QTY	LENGTH (MM)	WIDTH (MM)	HEIGHT (MM)	WEIGHT (KG)
CSTSCO01	2	480	1000	340	32,2
CSTSCO02	2	480	1250	340	35,0
CSTSCO03	2	480	1500	340	44,0
CSTSCO04	2	480	2000	340	61,4
CSTSCO05	2	480	3000	340	90,6
CSTSCO06	3	720	1000	510	47,1
CSTSCO07	3	720	1250	510	52,0
CSTSCO08	3	720	1500	510	65,0
CSTSCO09	3	720	2000	510	89,2
CSTSCO10	3	720	3000	510	131,5
CSTSCO11	4	960	1000	680	61,9
CSTSCO12	4	960	1250	680	61,9
CSTSCO13	4	960	1500	680	61,9
CSTSCO14	4	960	2000	680	117,1
CSTSCO15	4	960	3000	680	172,4
CSTSCO16	5	1200	1000	850	76,8
CSTSCO17	5	1200	1250	850	87,0
CSTSCO18	5	1200	1500	850	109,0
CSTSCO19	5	1200	2000	850	144,9
CSTSCO20	5	1200	3000	850	213,3
CSTSCO21	6	1440	1000	1020	91,7
CSTSCO22	6	1440	1250	1020	104,0
CSTSCO23	6	1440	1500	1020	136,0

CODE	STEP QTY	LENGTH (MM)	WIDTH (MM)	HEIGHT (MM)	WEIGHT (KG)
CSTSCO24	6	1440	2000	1020	172,7
CSTSCO25	6	1440	3000	1020	254,2
CSTSCO26	7	1680	1000	1190	106,6
CSTSCO27	7	1680	1250	1190	122,0
CSTSCO28	7	1680	1500	1190	155,0
CSTSCO29	7	1680	2000	1190	200,6
CSTSCO30	7	1680	3000	1190	295,1
CSTSCO31	8	1920	1000	1360	121,4
CSTSCO32	8	1920	1250	1360	140,0
CSTSCO33	8	1920	1500	1360	175,0
CSTSCO34	8	1920	2000	1360	228,4
CSTSCO35	8	1920	3000	1360	336,0
CSTSCO36	9	2160	1000	1530	136,3
CSTSCO37	9	2160	1250	1530	156,0
CSTSCO38	9	2160	1500	1530	197,0
CSTSCO39	9	2160	2000	1530	256,2
CSTSCO40	9	2160	3000	1530	376,9
CSTSCO41	10	2400	1000	1700	151,2
CSTSCO42	10	2400	1250	1700	174,0
CSTSCO43	10	2400	1500	1700	219,0
CSTSCO44	10	2400	2000	1700	284,1
CSTSCO45	10	2400	3000	1700	417,8





### SCULPTURE | **CUBO**

♻️ CORTEN 3 MM



CODE	LENGTH (MM)	WIDTH (MM)	HEIGHT (MM)	WEIGHT (KG)
CSCCUB01	2000	800	3000	450



### SCULPTURE | **TRIAN**

♻️ CORTEN 3 MM



CODE	LENGTH (MM)	WIDTH (MM)	HEIGHT (MM)	WEIGHT (KG)
CSCTRI01	1240	1240	2950	160



### SCULPTURE | **RICUM**

♻️ CORTEN 3 MM



CODE	LENGTH (MM)	WIDTH (MM)	HEIGHT (MM)	WEIGHT (KG)
CSCRIC01	2000	1500	1500	200







## GARDEN JEWELLERY | **CARPI**

✚ CORTEN 1 MM 📦 10 PCS



CODE	LENGTH (MM)	WIDTH (MM)	HEIGHT (MM)	WEIGHT (KG)
CJECA01	240	200	600	2,0
CJECA02	400	220	600	2,0
CJECA03	440	300	600	2,0



## GARDEN JEWELLERY | **PAPI**

✚ CORTEN 1 MM 📦 10 PCS



CODE	LENGTH (MM)	WIDTH (MM)	HEIGHT (MM)	WEIGHT (KG)
CJEPAP01	680	500	600	3,0



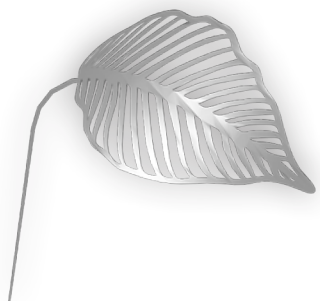
## GARDEN JEWELLERY | **POLI**

✚ CORTEN 2 MM 📦 10 PCS



CODE	LENGTH (MM)	WIDTH (MM)	HEIGHT (MM)	WEIGHT (KG)
CJEPOL01	270	100	600	2,0



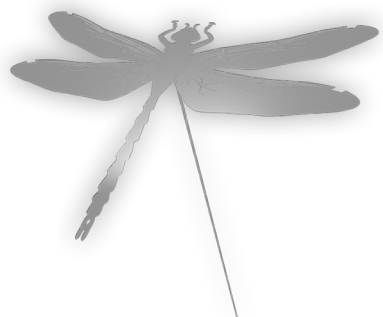


### GARDEN JEWELLERY | **CARPI**

✦ STAINLESS STEEL 1 MM 📦 10 PCS



CODE	LENGTH (MM)	WIDTH (MM)	HEIGHT (MM)	WEIGHT (KG)
IJECAR01	240	200	600	2,0
IJECAR02	400	220	600	2,0
IJECAR03	440	300	600	2,0

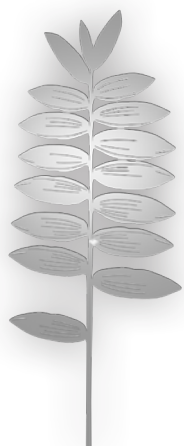


### GARDEN JEWELLERY | **PAPI**

✦ STAINLESS STEEL 1 MM 📦 10 PCS



CODE	LENGTH (MM)	WIDTH (MM)	HEIGHT (MM)	WEIGHT (KG)
IJEPAP01	680	500	600	3,0



### GARDEN JEWELLERY | **POLI**

✦ STAINLESS STEEL 2 MM 📦 10 PCS



CODE	LENGTH (MM)	WIDTH (MM)	HEIGHT (MM)	WEIGHT (KG)
IJEPOL01	270	100	600	2,0





### LETTERBOX | OFIS

✚ CORTEN 2 MM / STEEL 2 MM



CODE	LENGTH (MM)	WIDTH (MM)	HEIGHT (MM)	WEIGHT (KG)
CLBOFI01	300	400	1000	26,0
CLBOFI02	300	450	1000	30,0
GLBOFI01	300	400	1000	26,0
GLBOFI02	300	450	1000	30,0



### LETTERBOX | AMET

✚ CORTEN 2 MM / STEEL 2 MM



CODE	LENGTH (MM)	WIDTH (MM)	HEIGHT (MM)	WEIGHT (KG)
CLBAME01	300	400	1000	26,0
CLBAME02	300	450	1000	30,0
GLBAME01	300	400	1000	26,0
GLBAME02	300	450	1000	30,0



### LETTERBOX | ORATIO

✚ CORTEN 2 MM / STEEL 2 MM



CODE	LENGTH (MM)	WIDTH (MM)	HEIGHT (MM)	WEIGHT (KG)
CLBORA01	300	400	1000	26,0
CLBORA02	300	450	1000	30,0
GLBORA01	300	400	1000	26,0
GLBORA02	300	450	1000	30,0





## LAMP | LUMINUS

⚡ CORTEN 2 MM



CODE	LENGTH (MM)	WIDTH (MM)	HEIGHT (MM)	WEIGHT (KG)
CLILUM01	120	120	450	4,5
CLILUM02	120	120	600	6,0
CLILUM03	120	120	750	7,0





### SUNBED | CELLAR

⚡ GALVANIZED STEEL 5 MM  
+ ALDER WOOD



CODE	LENGTH (MM)	WIDTH (MM)	HEIGHT (MM)	WEIGHT (KG)
GWSCEL01	1640	530	950	24,0



### BENCH | PARCO

⚡ GALVANIZED STEEL 5 MM  
+ ALDER WOOD



CODE	LENGTH (MM)	WIDTH (MM)	HEIGHT (MM)	WEIGHT (KG)
GWPAR01	680	1500	800	24,0



### BENCH | PARCO

⚡ CORTEN 5 MM + ALDER WOOD



CODE	LENGTH (MM)	WIDTH (MM)	HEIGHT (MM)	WEIGHT (KG)
CWPAR01	680	1500	800	25,0





### SEAT | SELLA

⚡ GALVANIZED STEEL 5 MM  
+ ALDER WOOD



CODE	LENGTH (MM)	WIDTH (MM)	HEIGHT (MM)	WEIGHT (KG)
GWSEL01	800	800	450	51,0
GWSEL02	800	1600	450	70,0



### BENCH | OTIUM

⚡ MILD STEEL 3 MM  
+ ALDER WOOD



CODE	LENGTH (MM)	WIDTH (MM)	HEIGHT (MM)	WEIGHT (KG)
SWSOTI01	680	1500	800	24,0



### SEAT | SELLA

⚡ CORTEN 5 MM + ALDER WOOD



CODE	LENGTH (MM)	WIDTH (MM)	HEIGHT (MM)	WEIGHT (KG)
CWSEL01	800	800	450	51,0
CWSEL02	800	1600	450	70,0



### BENCH | OTIUM

⚡ CORTEN 3 MM + ALDER WOOD



CODE	LENGTH (MM)	WIDTH (MM)	HEIGHT (MM)	WEIGHT (KG)
CWSOTI01	680	1500	800	25,0



IMAGE | **MOON**



CODE	MATERIAL	LENGTH (MM)	WIDTH (MM)	HEIGHT (MM)	WEIGHT (KG)
SIMMOO01	MILD STEEL 2 mm	700	10	450	5,0
CIMMOO01	corten 2 mm	700	10	450	5,0



IMAGE | **JUPITER**



CODE	MATERIAL	LENGTH (MM)	WIDTH (MM)	HEIGHT (MM)	WEIGHT (KG)
SIMJUP01	MILD STEEL 2 mm	700	10	450	5,0
CIMJUP01	corten 2 mm	700	10	450	5,0



IMAGE | **EARTH**



CODE	MATERIAL	LENGTH (MM)	WIDTH (MM)	HEIGHT (MM)	WEIGHT (KG)
SIMEAR01	MILD STEEL 2 mm	700	10	450	5,0
CIMEAR01	corten 2 mm	700	10	450	5,0



IMAGE | **SATURN**



CODE	MATERIAL	LENGTH (MM)	WIDTH (MM)	HEIGHT (MM)	WEIGHT (KG)
SIMSAT01	MILD STEEL 2 mm	700	10	450	5,0
CIMSAT01	corten 2 mm	700	10	450	5,0





## PANORAMA | YOUR CITY



CODE	MATERIAL	LENGTH (MM)	WIDTH (MM)	HEIGHT (MM)	WEIGHT (KG)
SIMPY001	MILD STEEL 2 mm	700	10	450	5,0
CIMPY001	corten 2 mm	700	10	450	5,0



## MAP | YOUR CITY



CODE	MATERIAL	LENGTH (MM)	WIDTH (MM)	HEIGHT (MM)	WEIGHT (KG)
SIMMY001	MILD STEEL 2 mm	700	10	450	5,0
CIMMY001	corten 2 mm	700	10	450	5,0



## MAP | WORLD



CODE	MATERIAL	LENGTH (MM)	WIDTH (MM)	HEIGHT (MM)	WEIGHT (KG)
SIMWOR01	MILD STEEL 2 mm	1500	20	700	17,0
CIMWOR01	corten 2 mm	1500	20	700	17,0





### HANGER | ANIMALS



CODE	MATERIAL	LENGTH (MM)	WIDTH (MM)	HEIGHT (MM)	WEIGHT (KG)
SHDANI01	MILD STEEL 2 mm	150	25	250	0,5
CHDANI01	corten 2 mm	150	25	250	0,5

\* USED TO HANG ON THE WALL



### BOOKSHELF | ANIMALS



CODE	MATERIAL	LENGTH (MM)	WIDTH (MM)	HEIGHT (MM)	WEIGHT (KG)
SHDANI02	MILD STEEL 2 mm	100	100	232	0,5
CHDANI02	corten 2 mm	100	100	232	0,5

\* USED TO HANG ON THE WALL



### BOOKSHELF | ANIMALS



CODE	MATERIAL	LENGTH (MM)	WIDTH (MM)	HEIGHT (MM)	WEIGHT (KG)
SHDANI03	MILD STEEL 2 mm	100	120	200	1,0
CHDANI03	corten 2 mm	100	120	200	1,0



### CANDLESTICK | COUPLE



CODE	MATERIAL	LENGTH (MM)	WIDTH (MM)	HEIGHT (MM)	WEIGHT (KG)
SHDCOU01	MILD STEEL 2 mm	150	80	130	1,0
CHDCOU01	corten 2 mm	150	80	130	1,0



### HANGER | COUPLE



CODE	MATERIAL	LENGTH (MM)	WIDTH (MM)	HEIGHT (MM)	WEIGHT (KG)
SHDCOU02	mild steel 2 mm	150	25	88	0,5
CHDCOU02	corten 2 mm	150	25	88	0,5

\* USED TO HANG ON THE WALL



### BOOKSHELF | COUPLE



CODE	MATERIAL	LENGTH (MM)	WIDTH (MM)	HEIGHT (MM)	WEIGHT (KG)
SHDCOU03	MILD STEEL 2 mm	189	100	185	0,5
CHDCOU03	corten 2 mm	189	100	185	0,5





## CANDLESTICK | SKATER

≡ MILD STEEL 2 MM



CODE	LENGTH (MM)	WIDTH (MM)	HEIGHT (MM)	WEIGHT (KG)
SHDSKA02	100	100	232	0,5



## HANGER | REINDEER



CODE	MATERIAL	LENGTH (MM)	WIDTH (MM)	HEIGHT (MM)	WEIGHT (KG)
SHDREI01	MILD STEEL 2 mm	190	25	165	0,5
SHDREI01	corten 2 mm	190	25	165	0,5

\* USED TO HANG ON THE WALL



## BOOKSHELF | REINDEER



CODE	MATERIAL	LENGTH (MM)	WIDTH (MM)	HEIGHT (MM)	WEIGHT (KG)
SHDREI02	MILD STEEL 2 mm	120	190	200	1,0
CHDREI02	corten 2 mm	120	190	200	1,0







## CANDLESTICK | HORSE

♄ MILD STEEL 2 MM



CODE	LENGTH (MM)	WIDTH (MM)	HEIGHT (MM)	WEIGHT (KG)
SHDHOR01	150	80	200	1,0



## HANGER | HORSE



CODE	MATERIAL	LENGTH (MM)	WIDTH (MM)	HEIGHT (MM)	WEIGHT (KG)
SHDHOR02	mild steel 2 mm	180	25	141	0,5
CHDHOR02	corten 2 mm	180	25	141	0,5

\* USED TO HANG ON THE WALL



## BOOKSHELF | HORSE



CODE	MATERIAL	LENGTH (MM)	WIDTH (MM)	HEIGHT (MM)	WEIGHT (KG)
SHDHOR03	mild steel 2 mm	164	120	200	1,0
CHDHOR03	corten 2 mm	164	120	200	1,0



### NAPKIN HOLDER | **COUPLE**



CODE	MATERIAL	LENGTH (MM)	WIDTH (MM)	HEIGHT (MM)	WEIGHT (KG)
SHDCOU04	MILD STEEL 2 mm	156	32	185	0,5
CHDCOU04	corten 2 mm	156	32	185	0,5

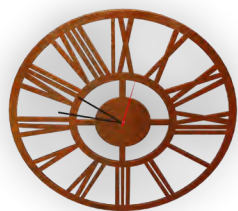


### CANDLESTICK | **MAN**

⚡ MILD STEEL 2 MM



CODE	LENGTH (MM)	WIDTH (MM)	HEIGHT (MM)	WEIGHT (KG)
SHDMAN01	150	25	250	0,5



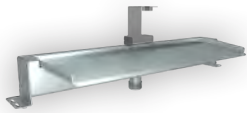
### CLOCK | **KELLO**



CODE	MATERIAL	DIAMETER (MM)	HEIGHT (MM)	WEIGHT (KG)
SHDKEL01	mild steel 2 mm	500	2	2,0
CHDKEL01	corten 2 mm	500	2	2,0







### ACCESSORY | SPOUT

♁ STAINLESS STEEL



CODE	LENGTH (MM)	WEIGHT (KG)
ACSP0U01	400	3,0
ACSP0U02	600	5,0
ACSP0U03	800	6,0

\* CAN BE COMBINED WITH WEFE AND SUSCEPT. ILLUSTRATIVE PICTURE



### ACCESSORY | SPLITTER



CODE	WEIGHT (KG)
ACSPLIT01	1,0

\* CAN BE COMBINED WITH RIPLE AND SOMNI. ILLUSTRATIVE PICTURE



### ACCESSORY | TRANSFORMER



CODE	WEIGHT (KG)
ACTRANS01	1,0

\* CAN BE COMBINED WITH RIPLE AND SOMNI. ILLUSTRATIVE PICTURE



### PUMP | PORE

♁ PLASTICS



CODE	WEIGHT (KG)
ACPUMP02	4,0

\* CAN BE COMBINED WITH WEFE AND SUSCEPT. ILLUSTRATIVE PICTURE



### PUMP | PODO

♁ CAST IRON + BRASS



CODE	WEIGHT (KG)
ACPUMP03	5,0

\* CAN BE COMBINED WITH WEFE. ILLUSTRATIVE PICTURE



### PUMP | POMI

♁ PLASTICS



CODE	WEIGHT (KG)
ACPUMP04	3,0

\* CAN BE COMBINED WITH RIPLE AND SOMNI. ILLUSTRATIVE PICTURE



### PUMP | POLA

♁ PLASTICS



CODE	WEIGHT (KG)
ACPUMP01	3,0

\* CAN BE COMBINED WITH RIPLE AND SOMNI. ILLUSTRATIVE PICTURE



### ACCESSORY | LED HOLDER

♁ STAINLESS STEEL



CODE	WEIGHT (KG)
ACLHOL01	1,0

\* CAN BE COMBINED WITH SPOUT. ILLUSTRATIVE PICTURE



### ACCESSORY | LED SPOUT



CODE	WEIGHT (KG)
ACLSP001	1,0

\* CAN BE COMBINED WITH RIPLE AND SOMNI. ILLUSTRATIVE PICTURE



### ACCESSORY | LED 6000K



CODE	WEIGHT (KG)
ACLED01	1,0

\* CAN BE COMBINED WITH RIPLE AND SOMNI. ILLUSTRATIVE PICTURE



KIT | **ACCWAT01**



CODE

ACPUMP01
ACTRANS01
ACLLED01
ACLESP01

KIT | **ACCWAT05**



CODE

ACPUMP02
ACTRANS01
ACSPLIT01 x2
ACLLED01 x5
ACLESP01 x 5

KIT | **ACCWEF03**



CODE

ACPUMP03
ACSP0U03

KIT | **ACCSUS03**



CODE

ACPUMP02
ACSP0U03

KIT | **ACCCON03**



CODE

ACPUMP01
ACLLED01 x4
ACLESP01 x4
ACTRANS01
ACSPLIT01

KIT | **ACCWAT03**



CODE

ACPUMP02
ACTRANS01
ACSPLIT01
ACLLED01 x3
ACLESP01 x 3

KIT | **ACCWEF01**



CODE

ACPUMP03
ACSP0U01

KIT | **ACCSUS01**



CODE

ACPUMP02
ACSP0U01

KIT | **ACCCON01**



CODE

ACPUMP01
ACLLED01 x2
ACLESP01 x2
ACTRANS01
ACSPLIT01

KIT | **ACCLIG01**



CODE

ACLH0L01
ACLLED01
ACTRANS01

KIT | **ACCWAT04**



CODE

ACPUMP02
ACTRANS01
ACSPLIT01 x2
ACLLED01 x4
ACLESP01 x 4

KIT | **ACCWEF02**



CODE

ACPUMP03
ACSP0U02

KIT | **ACCSUS02**



CODE

ACPUMP02
ACSP0U02

KIT | **ACCCON02**



CODE

ACPUMP01
ACLLED01 x3
ACLESP01 x3
ACTRANS01
ACSPLIT01

We realize your ideas.  
Here are some inspirations.



### PERGOLA

CORTEN AND ALUMINIUM



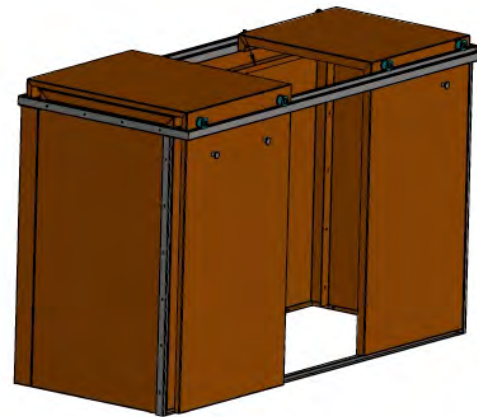
### CUSTOM-MADE PRODUCTS

CORTEN AND ALUMINIUM



### DOOR AND GATE

CORTEN AND ALUMINIUM



### GARBAGE CAN BOX

CORTEN 2 MM

